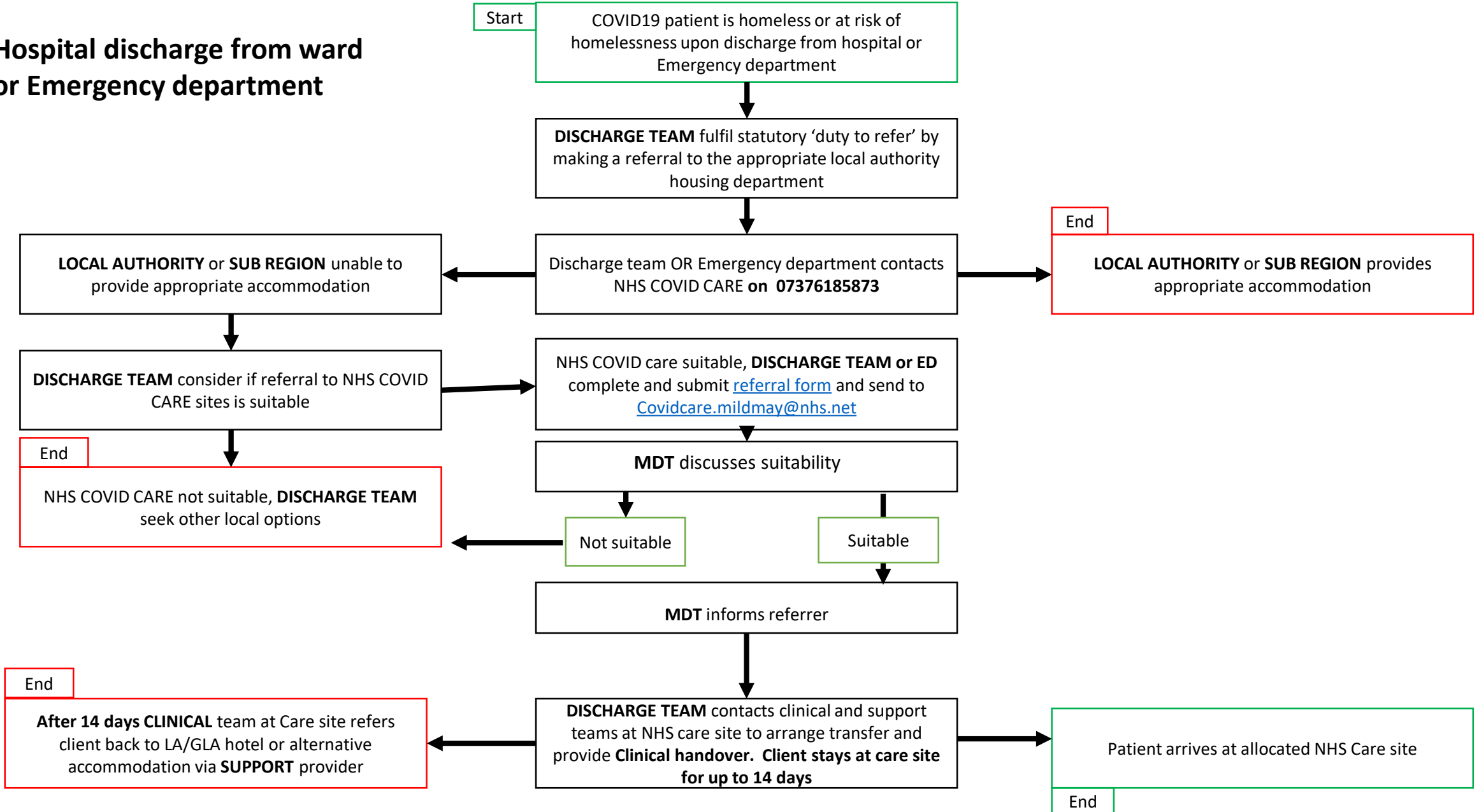


Hospital discharge from ward or Emergency department



Start

COVID19 patient is homeless or at risk of homelessness upon discharge from hospital or Emergency department

DISCHARGE TEAM fulfil statutory 'duty to refer' by making a referral to the appropriate local authority housing department

Discharge team OR Emergency department contacts NHS COVID CARE on **07376185873**

End

LOCAL AUTHORITY or SUB REGION provides appropriate accommodation

LOCAL AUTHORITY or SUB REGION unable to provide appropriate accommodation

DISCHARGE TEAM consider if referral to NHS COVID CARE sites is suitable

NHS COVID care suitable, DISCHARGE TEAM or ED complete and submit [referral form](#) and send to Covidcare.mildmay@nhs.net

End

NHS COVID CARE not suitable, DISCHARGE TEAM seek other local options

MDT discusses suitability

Not suitable

Suitable

MDT informs referrer

End

After 14 days CLINICAL team at Care site refers client back to LA/GLA hotel or alternative accommodation via SUPPORT provider

DISCHARGE TEAM contacts clinical and support teams at NHS care site to arrange transfer and provide **Clinical handover**. Client stays at care site for up to 14 days

Patient arrives at allocated NHS Care site

End