



**Healthy London
Partnership**



North West London CYP asthma meeting

Supported by and delivering for:



Public Health
England



SUPPORTED BY
MAYOR OF LONDON

London's NHS organisations include all of London's CCGs, NHS England and Health Education England



CONNECTING CARE FOR CHILDREN:

Patient engagement

INVESTED IN BY:



Health Education
North West London

Imperial College Healthcare 
NHS Trust


West London
Clinical Commissioning Group


Ealing
Clinical Commissioning Group

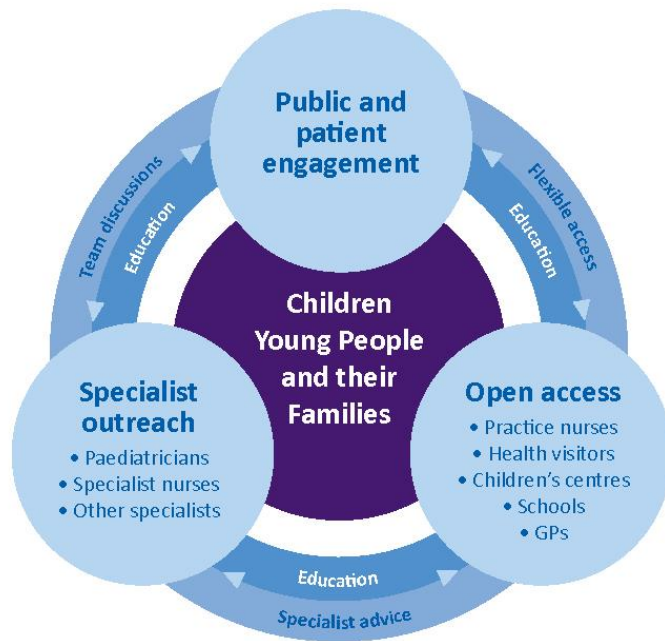

Hammersmith and Fulham
Clinical Commissioning Group

SUPPORTED BY:

London Boroughs of H&F, K&C and Westminster City Council
Paddington Development Trust & CLCH NHS Trust

CHILD HEALTH GP HUB

- 3 core elements
- Centred in primary care
- Built around monthly MDT and clinic



- 3-4 GP practices within existing locality
- ~20,000 practice population, (~4,000 children)



PRACTICE CHAMPIONS

Volunteer for your GP practice

become a Practice Champion and help shape children's healthcare

Your Practice would like to invite you to join us as a Practice Champion. We want to improve the healthcare of children and young adults in our community. Practice Champions use their experience, skills and passion to help design healthcare services for children and families. Training will be provided.

For more information please ask for a volunteer application form at reception or call/text Bea on 07852176747

connecting care for children

What Matters to you & your Child?

Getting healthcare for my child
Finding a good place?

How to look after my child's skin

Keeping kids safe from a website

Access to services for children & disabilities

Therapy can be done at home or in a GP

New means of transport?

More of...
like to have support
Council groups

Poster / information leaflets
Facebook group

Maximising...
- 20% of the time on average

lets talk about website

Right help
- GP
- Pharmacist
- Drs

How to use online
Few events

More contact with local school and centres

Teaching on website -
- when and trigger / use of website

Learning helping...
- information

First of all we need training to train us...
- information
- information
- information

What Would you like to achieve/gain?

More resources for children services

improve my knowledge help with my job

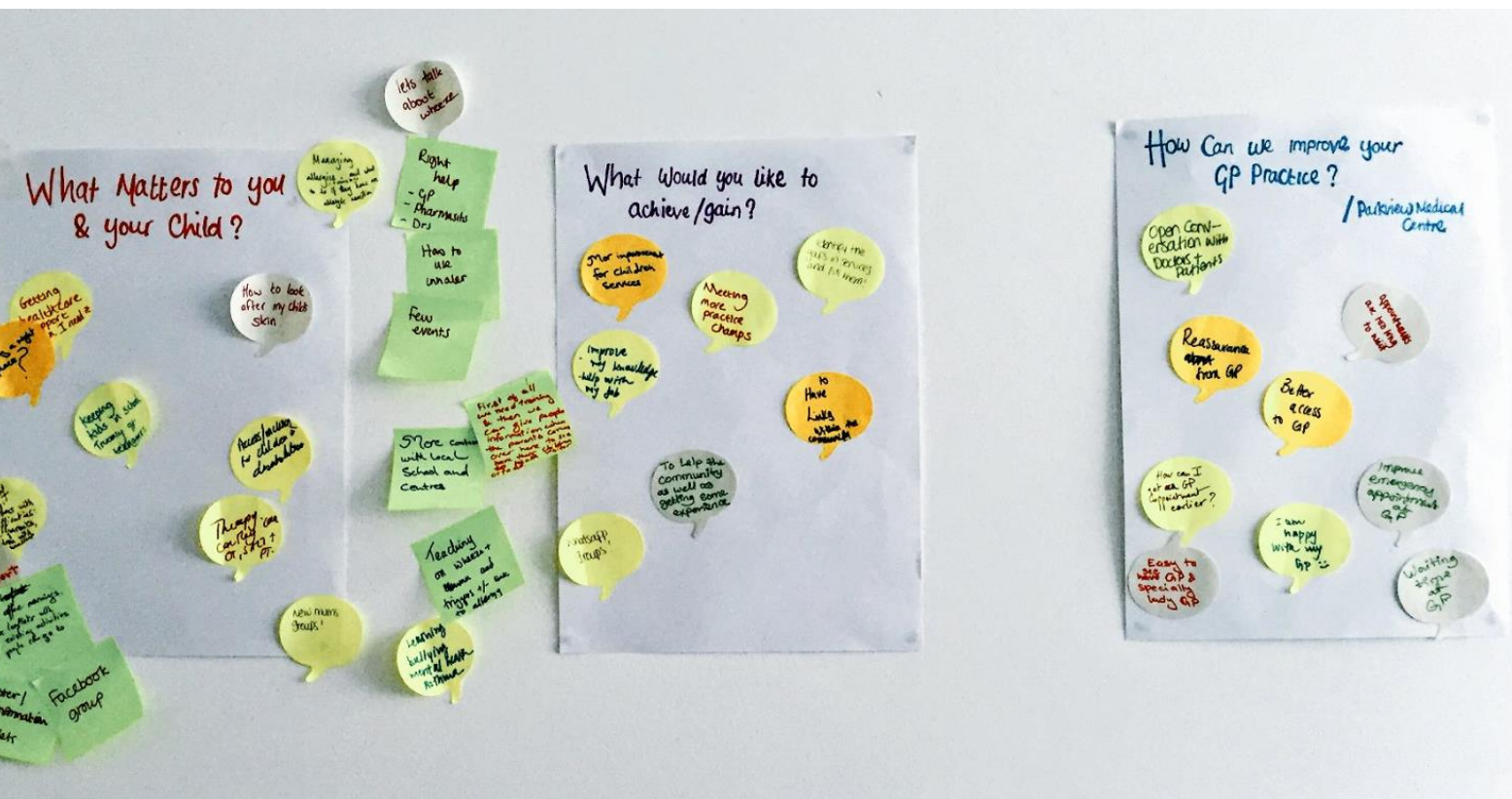
To help the community as well as patients some experience

WhatsApp groups

Needing more practice changes

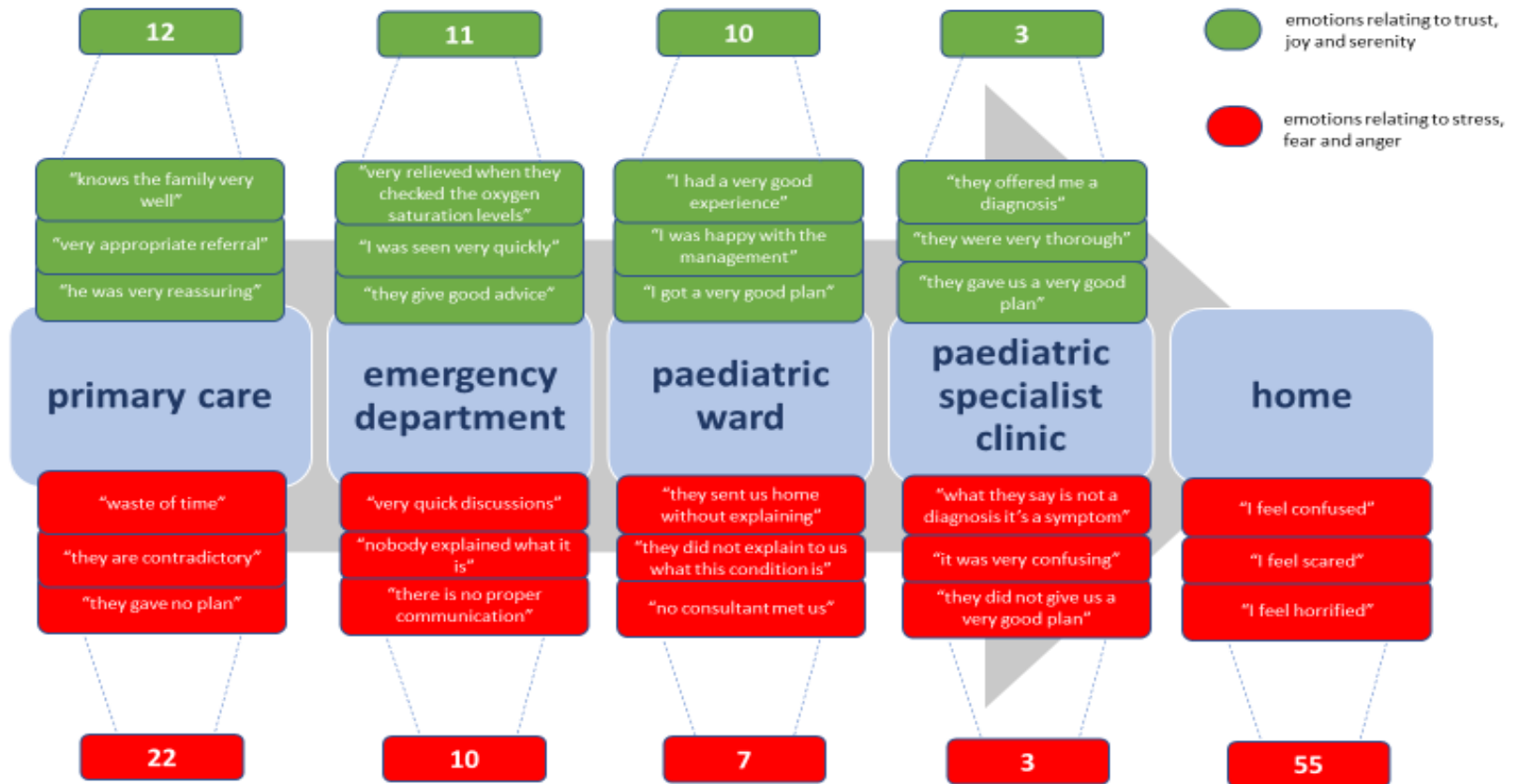
Would be nice to have and in home!

to have links with the community

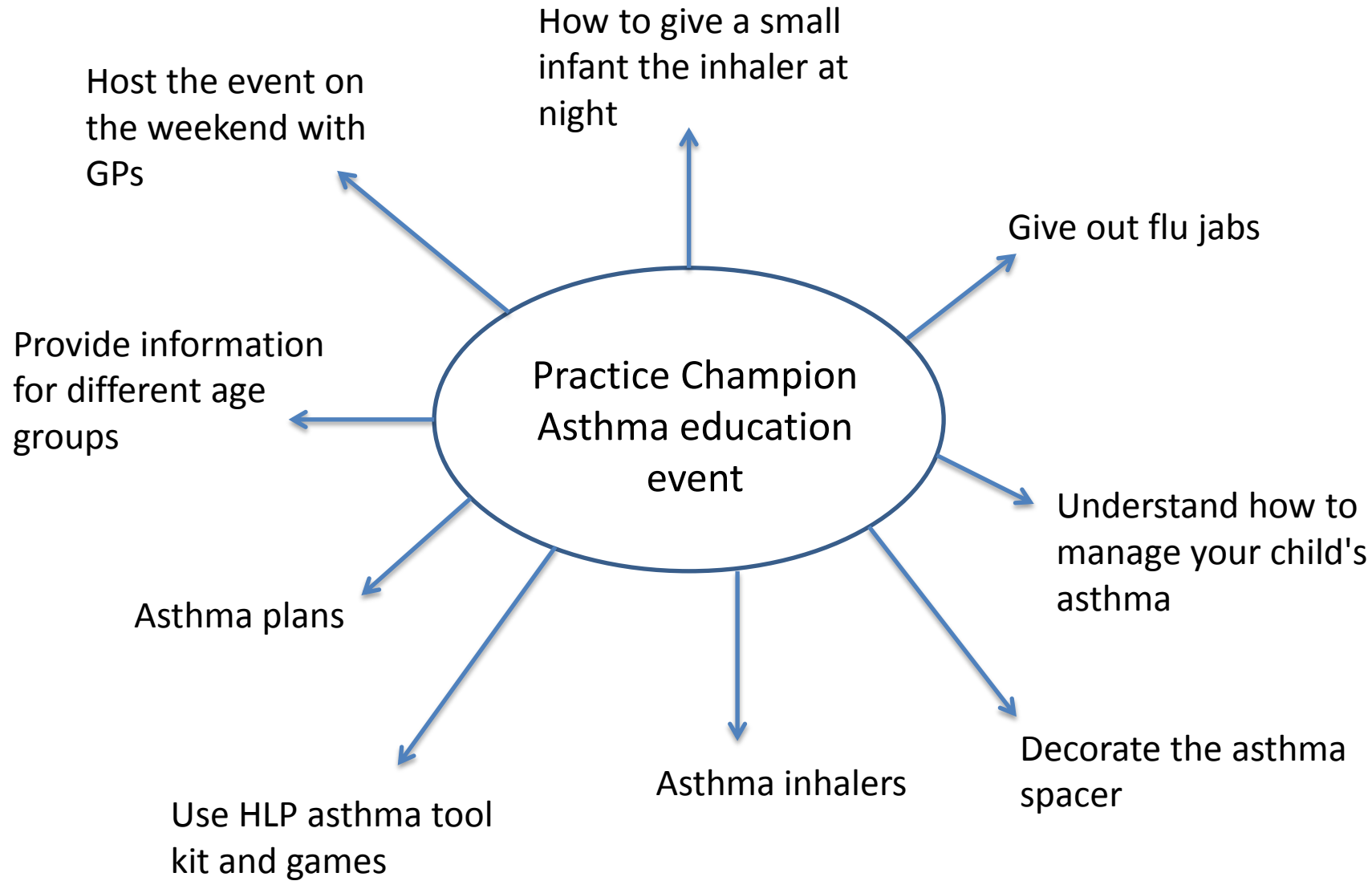


How do parents of preschool wheezers feel when they experience healthcare services

emotional map describing parental feelings



<https://vimeo.com/192988688>



How WSIC can support with asthma care?

Whole room discussion

In light of the long term plan, how do we join the system up to ensure CYP with asthma have a voice at STP level? What form should a network take?

In light of the long term plan, how do we join the system up to ensure CYP with asthma have a voice at STP level? What form should a network take?

Q1. What would you like to see a NWL asthma network deliver

Q2. When thinking about how you would like to develop the Asthma Network in NWL how would you envisage the future?

1. Continue and develop existing establishment and arrange forum to share ideas and information informally (**community of practice**)
2. Existing models but to develop forum to share education, training, guidelines and innovation (**information network**)
3. Existing service models: but to build on existing models to develop clinical networks across system linked using data to drive change and to shared education, training, audit, innovation and linked to severe asthma network. (**clinical non -managed network**)
4. Existing service models: but to build on existing models to develop clinical networks across system linked to shared education training audit and a managed severe asthma network (**Mixed non-managed/managed network**)(ie. non-managed network for community/primary and secondary care- managed severe asthma network)
5. Fully managed clinical asthma network (**commissioned integrated asthma service** across the whole service)

Go to www.menti.com and use the code 86 47 55



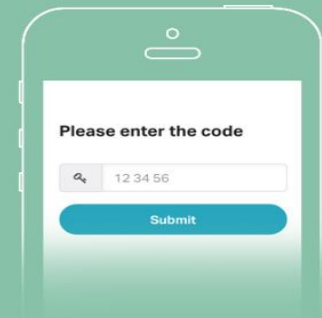
1

Grab your phone

www.menti.com

2

Go to www.menti.com



3

Enter the code 86 47 55 and vote!

Q3. Do you have any other ideas that could help develop the Asthma Network ?

Feedback from today

Q4. Feedback: Tell us what you thought about today's workshop? What will you take away?

Go to www.menti.com and use the code 17 02 48



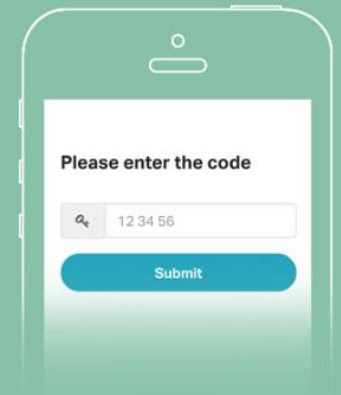
1

Grab your phone

www.menti.com

2

Go to www.menti.com



3

Enter the code 17 02 48 and vote!