

Meeting Demand

Pamela Parker

Ultrasound Specialty Manager



Great Staff - Great Care - Great Future

Hull and East Yorkshire Hospitals
NHS Trust



Introduction

- Clinical Specialist in general abdominal ultrasound
- Manager of Ultrasound service for HEYT



Introduction

- 23 ultrasound rooms/machines
- 8 sites across 40 mile radius
- 21.6 WTE sonographers (29 sonographers)
- 3 WTE trainees



Hull Experience

City Of Culture, 2017



DID YOU KNOW?

- ◆ Reflecting Hull's truly independent spirit, the city is the only one in the UK with cream coloured phone boxes
- ◆ People from Hull are called 'Hullensians'
- ◆ Hull has the world's largest Yorkshire pudding factory
- ◆ Hull's Amy Johnson was a pioneering pilot who flew alone from Britain to Australia in 1930

My Other Hat

BMUS 

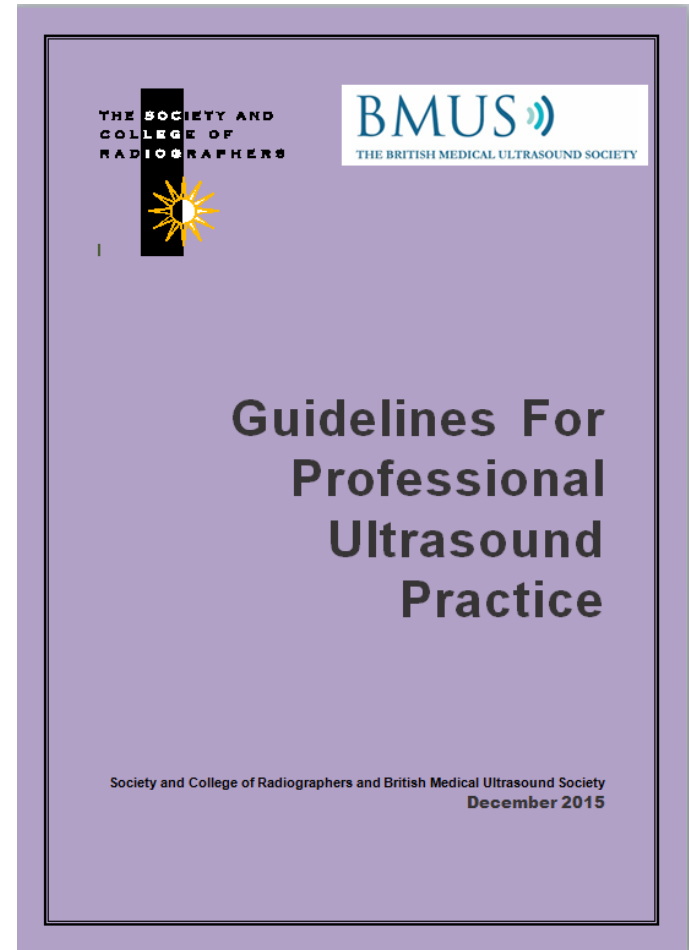
THE BRITISH MEDICAL ULTRASOUND SOCIETY

BMUS RECOMMENDED GOOD PRACTICE GUIDELINES

JUSTIFICATION OF ULTRASOUND REQUESTS

REVISION 1

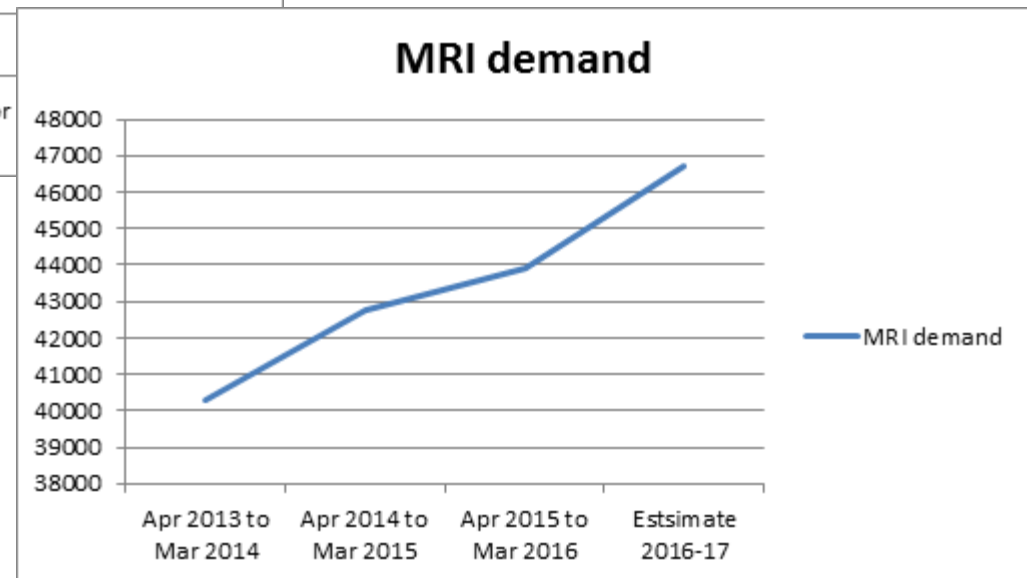
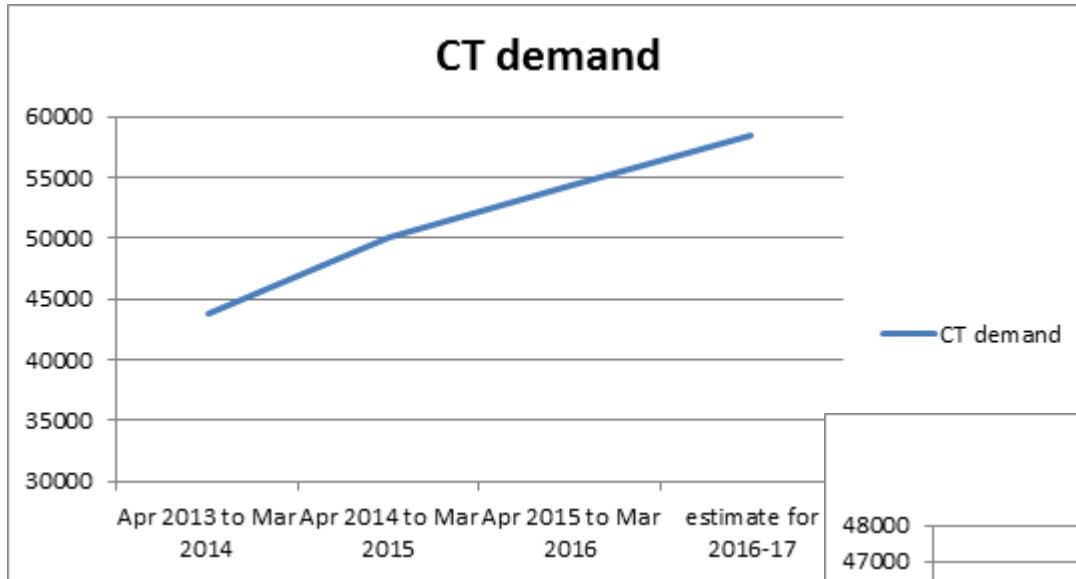
NOVEMBER 2016



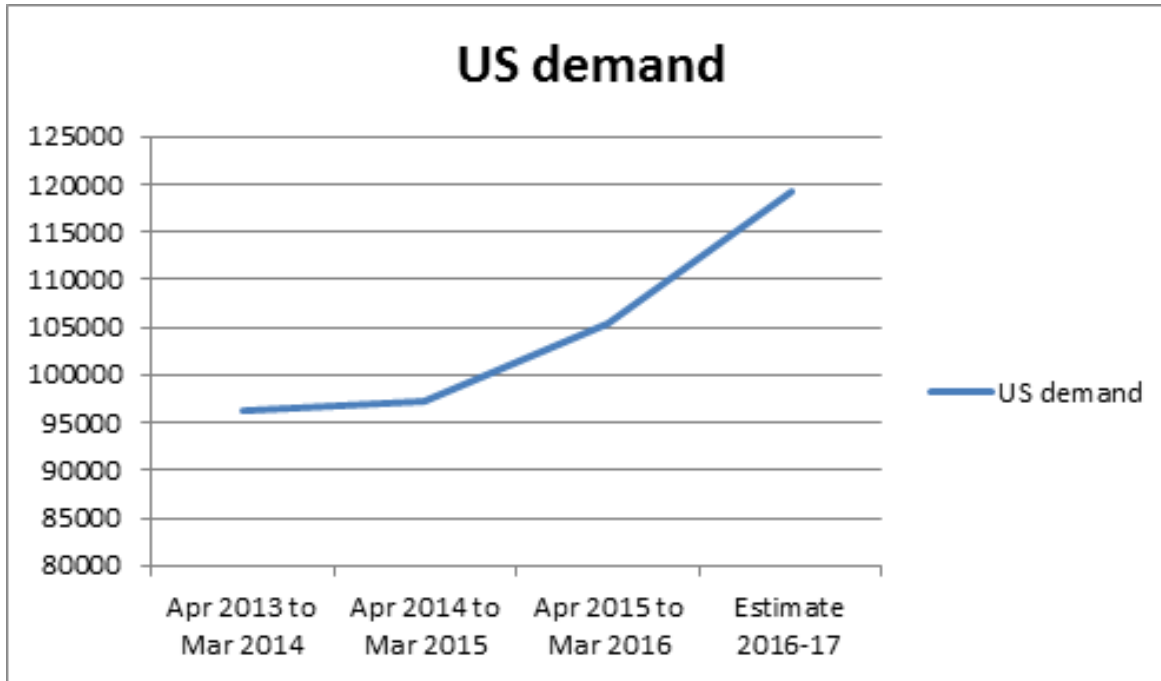
Best Patient Care

- Right Test, right place, right time
- High quality examination
- Performed by competent sonographers
- Underpinned by education and development
- Making best uses of all resources
- Developing services and new technologies

Demand

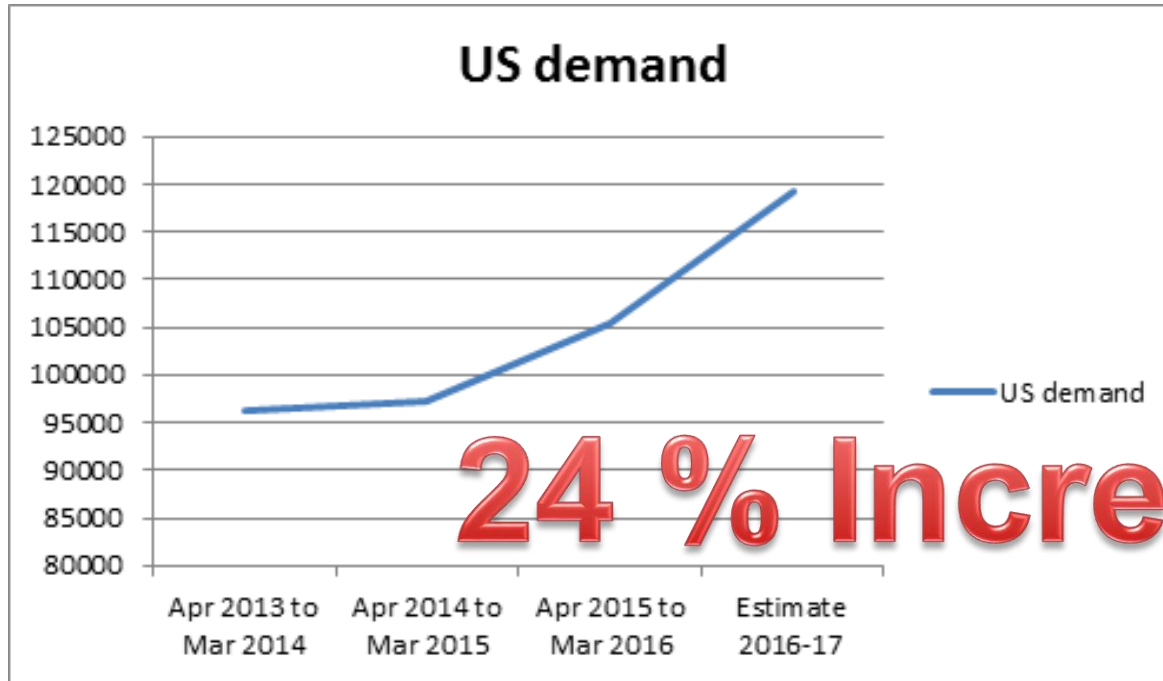


US Demand



Attendance Specialty Name	Apr 2013 to Mar 2014	Apr 2014 to Mar 2015	Apr 2015 to Mar 2016	Estimate 2016-17
US demand	96145	97217	105325	119337

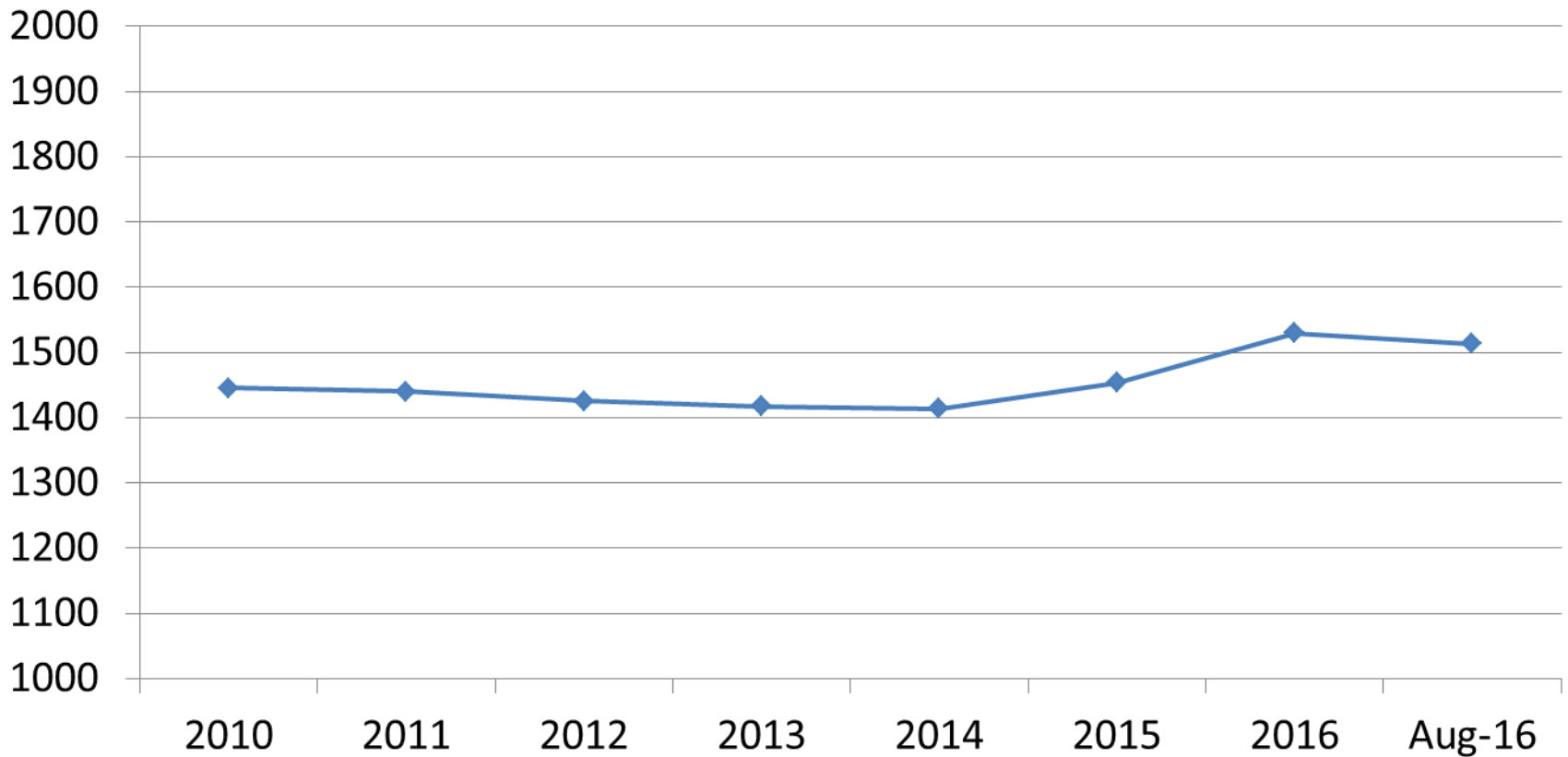
US Demand



Attendance Specialty Name	Apr 2013 to Mar 2014	Apr 2014 to Mar 2015	Apr 2015 to Mar 2016	Estimate 2016-17
US demand	96145	97217	105325	119337

Staff in post

Staff in Post adjusted



Solutions to Meeting Demand

- Employ more staff
- Create more US rooms
- Turn off the tap

More Staff?

Estimated 12% true vacancy rate for sonographer

Attrition to more lucrative agency work

Non-comparable pay bands in NHS Trust

HEE budget cuts



Create more US rooms



Turn off the tap



BMUS RECOMMENDED GOOD PRACTICE GUIDELINES

- Intended to support referrers to Ultrasound and ultrasound providers in the appropriate selection of patients for whom ultrasound would be beneficial in terms of diagnosis and or disease management.

Financial Sense

- The current tariff for an ultrasound examination is at least £44 per examination rising to £78 for complex procedures.
- Making best use of resources is essential for sound financial management and good patient care.

Clinical Sense

- Right Test
- Right Place
- Right Time

Clinical Sense

- Referral: **Abdo Pain**
- ?Upper Lower
- ?related to food
- ?spasmodic / frequent
- ?urinary symptoms
- ?bowel symptoms
- ????? Lets do US
- Points mean prizes!



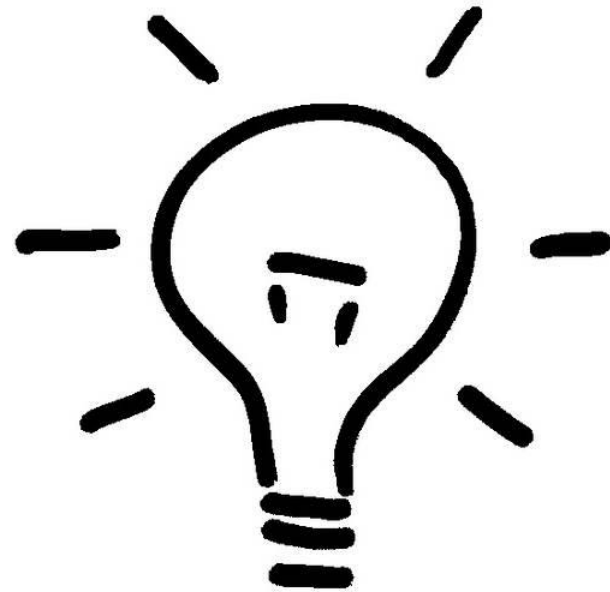
Clinical Sense

- Referral: **Abdo pain**, Mainly in RUQ with shoulder pain particularly after fatty food ?
Gallstones or biliary disease
- Right Test – **ULTRASOUND!**



Clinical Sense

- Referral: **Abdo Pain**, LLQ, some unexplained weight loss, O/E possible mass in pelvis
- Right Test: CT



Impact of Guidelines

- Reviewed typical referrals for abdominal US in one week period
- 11% referrals did not have a clinical question or could be justified under the BMUS guidelines

How To Implement

- Need to reduce waiting times
- Walk in service in 2015
- Reviewed referrals
- 50% had no or uncertain clinical questions
- Background working with BMUS on guidelines

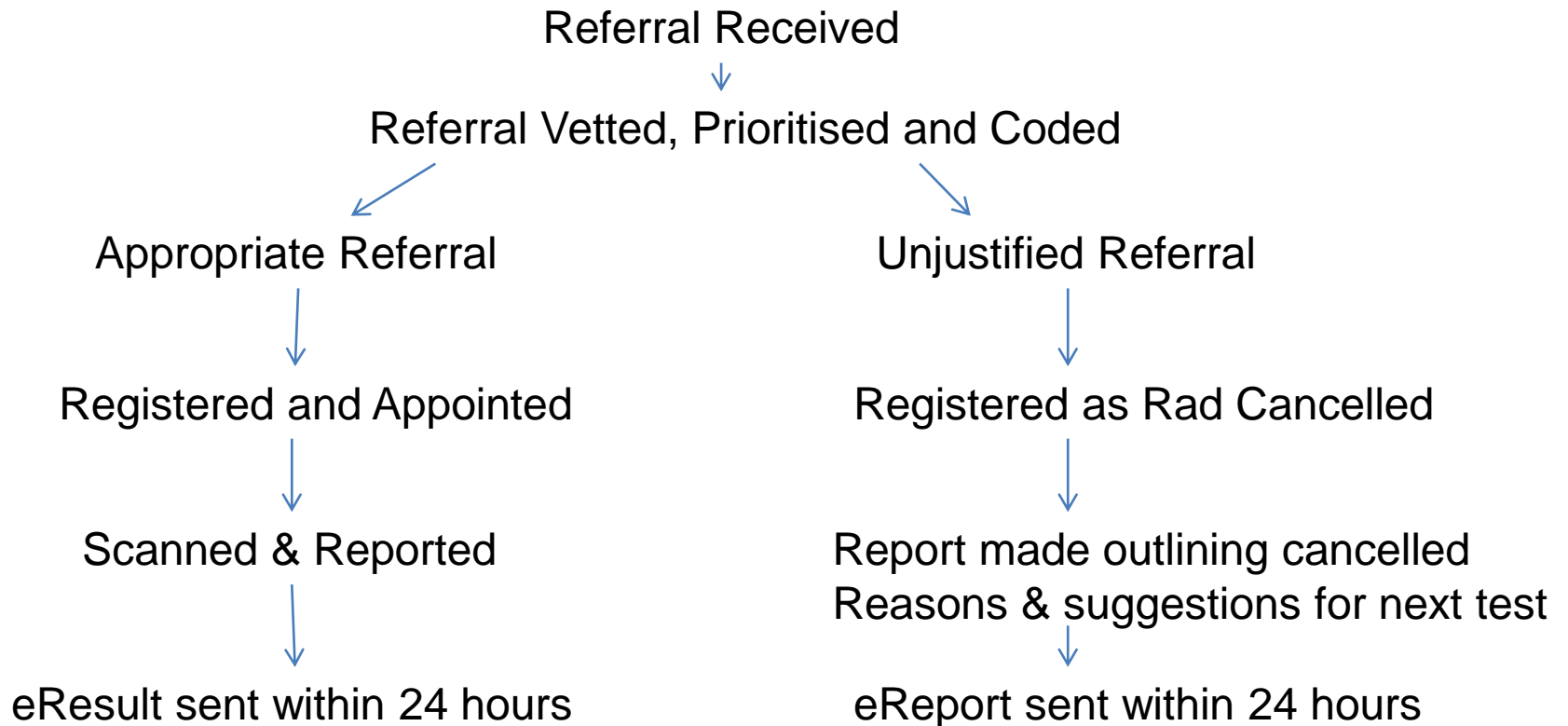
How To Implement

- Meeting with CCG chair, contracts lead for Trust and CCG and head of US
- Agreed target waiting times
- Reviewed demand, capacity and forecast growth
- Demand has to be controlled

How To Implement

- BMUS guidelines circulated to CCG Pathway Review group (PRG) and Local Medical Committee
- Clinical Director of Radiology and US lead invited to meet with PRG
- Negotiated local amendments to BMUS doc
- Developed local CT referral guidelines

Process



Process - comments

- Referrals need to be registered in some way
- Review of cancellation
 - Volume
 - Referrers
 - reasons

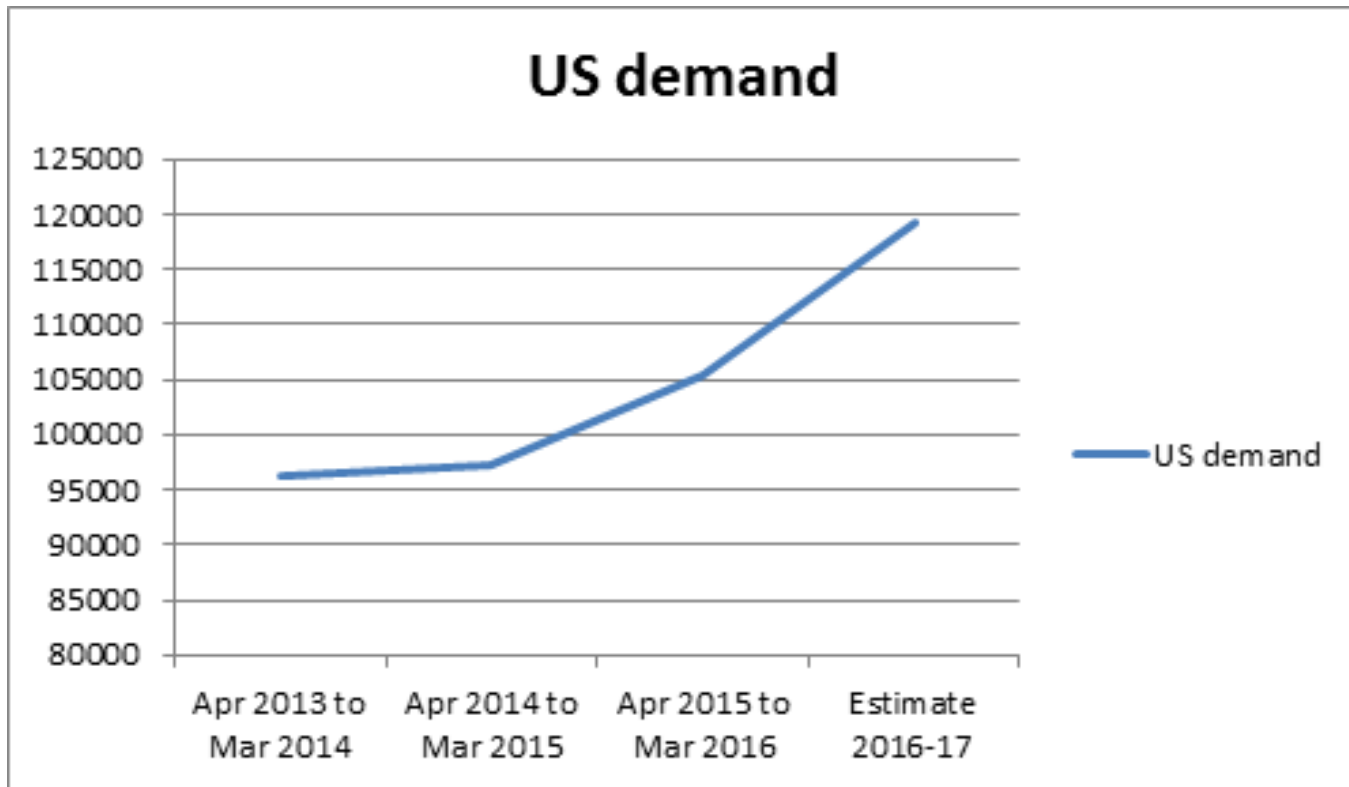
Process - comments

- Vetting done by team of sonographers
- Cancellation and reports performed by senior specialist team
- Clinical support from radiologists

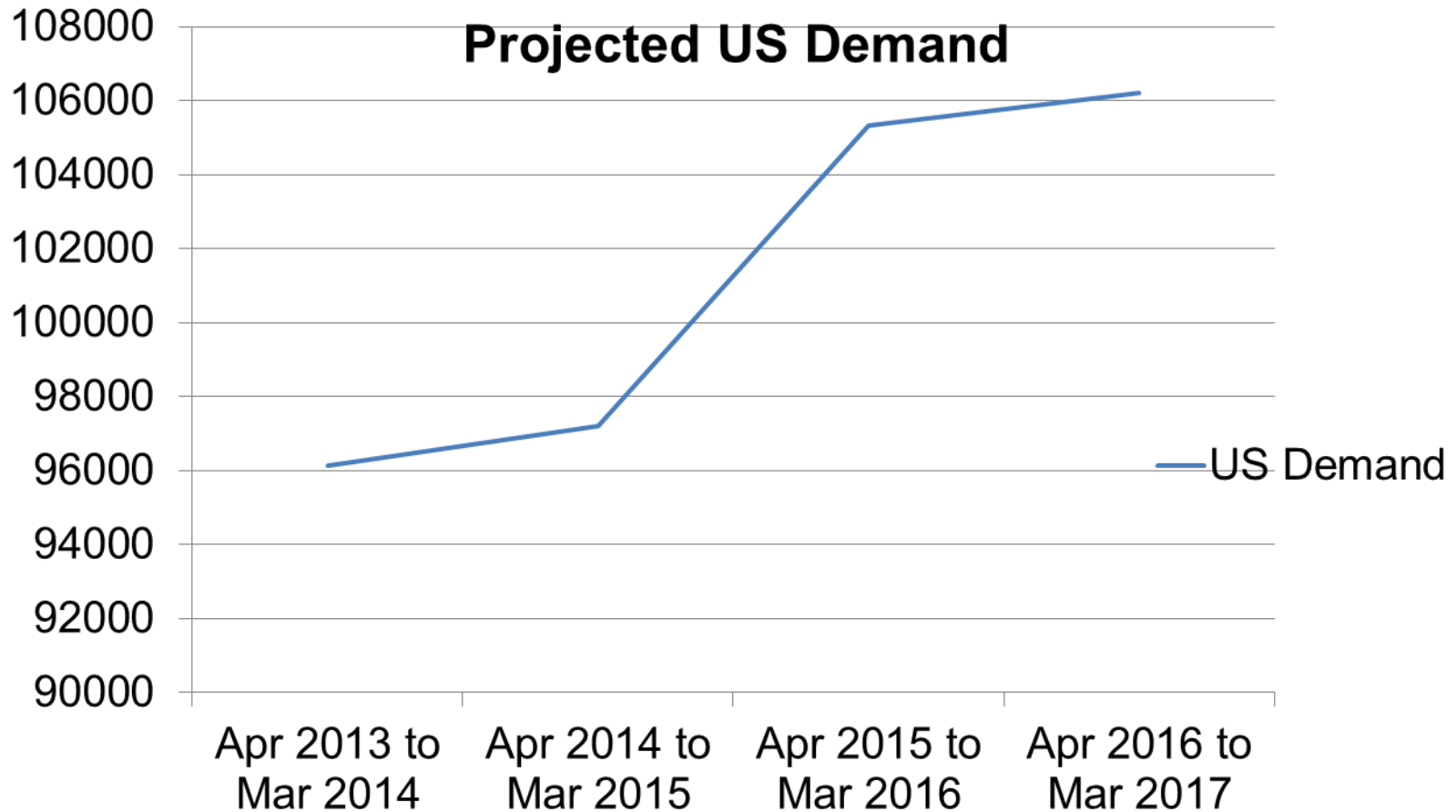
Key Points

- Clinician engagement
- Parity between primary and secondary care referrers
- Multi-modality pathways required
- Time is needed to vet referrals appropriately
- Continued audit of pathway & appropriateness of guidelines

Reality



Projected outcome



You are
Invited !



To ask any questions!