

Asthma in Islington



ISLINGTON

- 4th most deprived Borough in London
- 4th most polluted Borough in London
- Highest smoking rates in London (22.2% of the population)
- Third-highest level of child poverty in the country
- 40,000 Child and young person population
- 2,685 Children and young people with a diagnosis of asthma
- Asthma is a North Central London STP priority
- Asthma is an Islington and Haringey Wellbeing Partnership priority

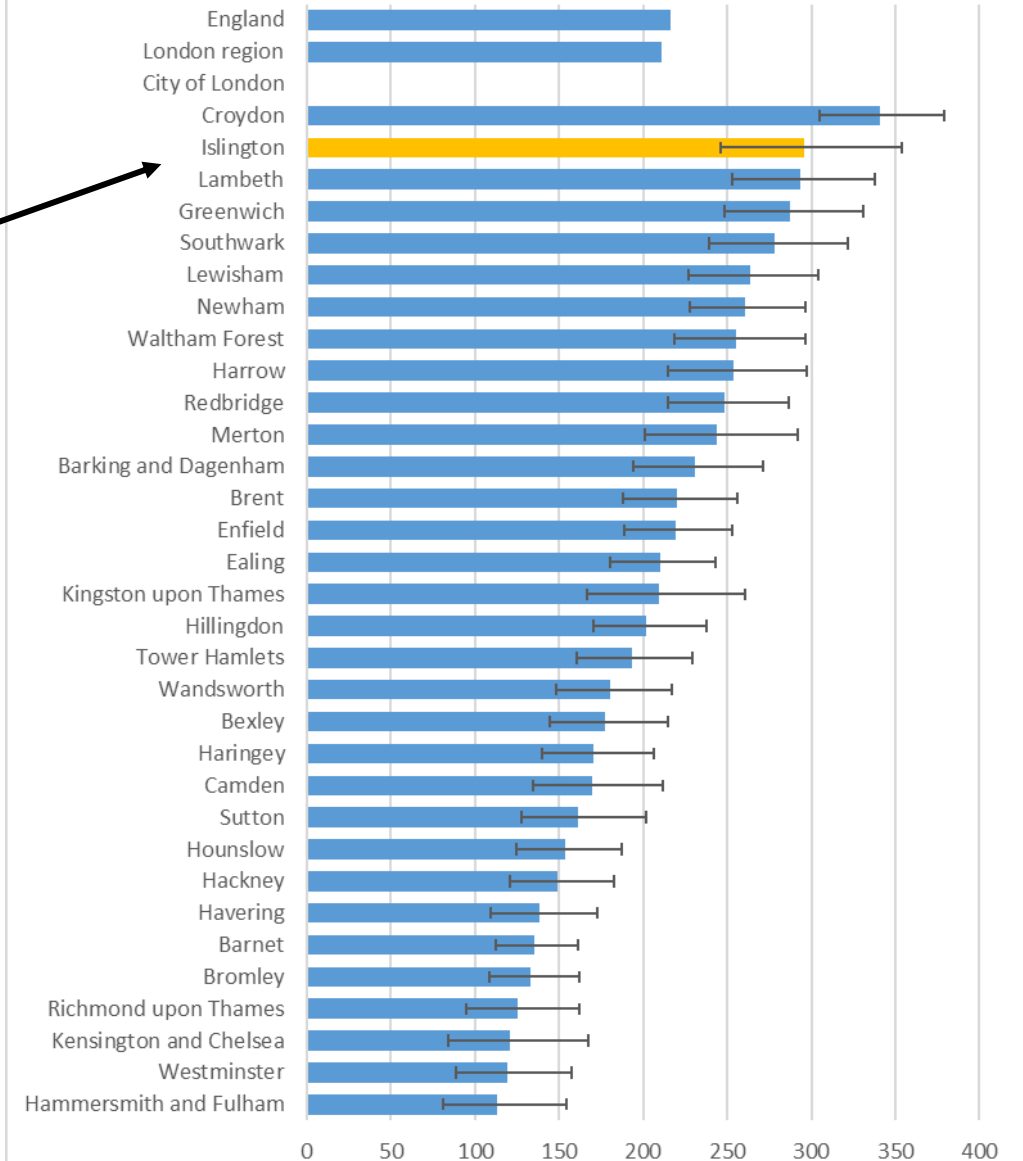


EMERGENCY ASTHMA ADMISSIONS

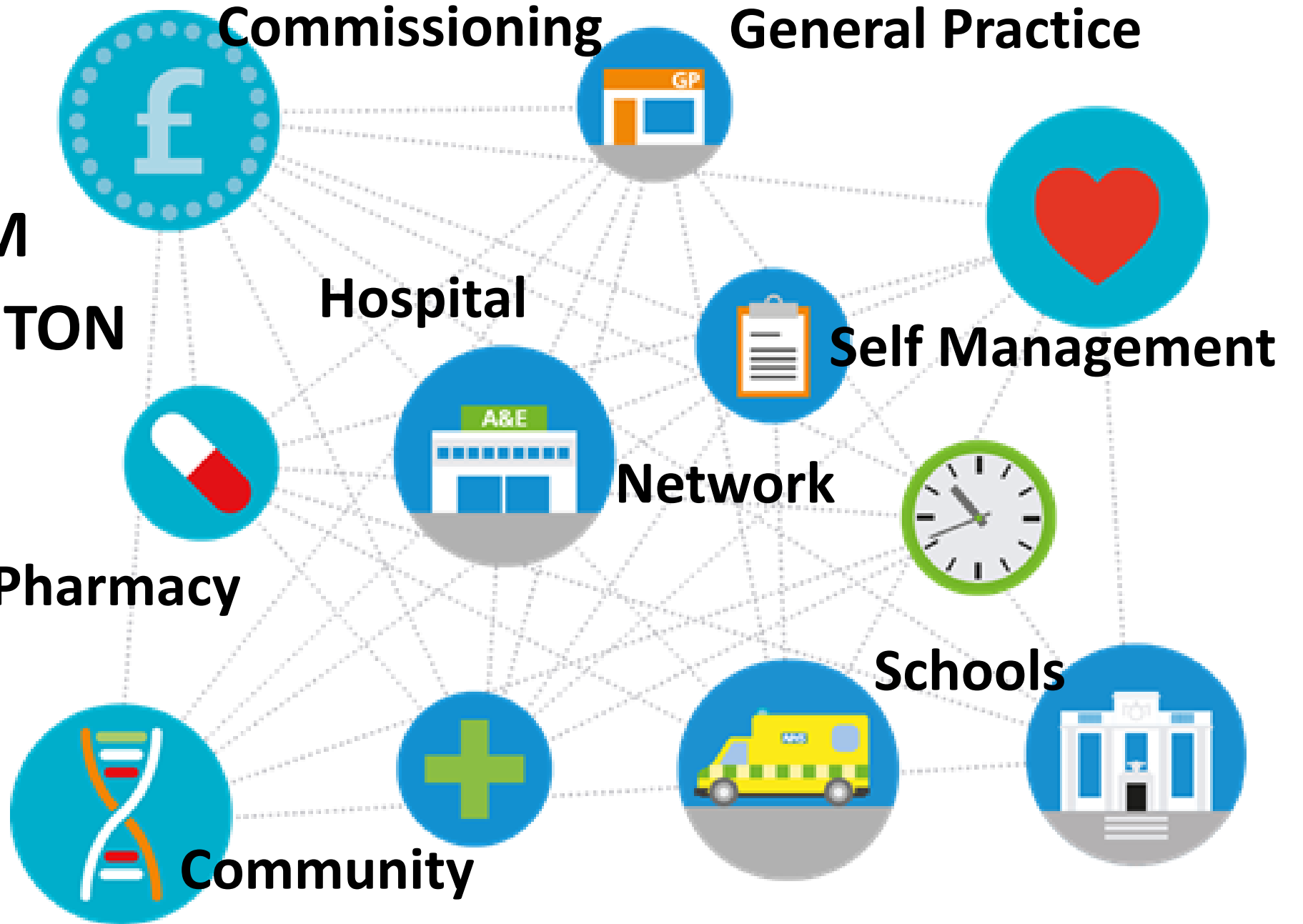
Second worst performing Borough in
London (14/15)



Hospital admissions for asthma (under 19 years),
London LAs, 2014/15



WHOLE SYSTEM TRANSFORMATION





HOSPITAL

- **Leading the vision for asthma across the system**
- **Asthma and Allergy team**
- **Asthma/Wheeze discharge bundle**
- **Identifying and prioritising high risk patients**
- **Education for all staff and AHP**
- **Breaking down barriers across the system**



COMMUNITY

HOSPITAL @ HOME

- **Assessment**
- **ED referrals**
- **Reduced length of stay in hospital**
- **Acute exacerbation management and weaning**



GENERAL PRACTICE

CHILDREN'S NURSES IN PRIMARY CARE

- **Review of frequent flyers**
- **48 hr reviews**
- **Practice nurse teaching**
- **Inhaler technique and disease management reviews**



LOCALLY COMMISSIONED SERVICE – VIW/Asthma

- **Lead GP**
- **Paediatric asthma education**
- **Increased appointment time to 20 minutes**
- **Asthma Control Test**
- **Care plan**
- **EMIS template**



SCHOOLS/NURSERIES

ASTHMA FRIENDLY SCHOOL NURSE PROJECT

- Schools have to meet 5 standards: Policy, training, care plans, emergency medication and an asthma register
- 42/64 schools have so far met the 5 standards
- Starting to roll out in 16 Children's Centre's



SELF - MANAGEMENT PILOT

- Developing a co-produced self-management course
- Co-facilitated by a young person
- Build knowledge, skills and confidence for young people to self manage their asthma
- Young people aged 14-17 yrs



PHARMACY

PRACTICE BASED PHARMACY AND COMMUNITY PHARMACY

- Next steps to develop practice based pharmacists and community pharmacy



INTEGRATED NETWORKS

- Integrated networks in GP Practices consisting of GP's, Paediatrician, CAMHS, Community Nurse, Health Visitor, School Nurse and Family support
- Children with asthma can be discussed at these networks

EMERGENCY ASTHMA ADMISSIONS

**Eighth worst performing Borough in
London (15/16)**

