



**Healthy London
Partnership**

#AskAboutAsthma: *from vision to reality*

Data pack for asthma for London and STPs

Sara Nelson RGN, Bsc (Hons), MSC, QN

Healthy London Partnership Children and Young People's Programme

21st November 2017

Supported by and delivering for:



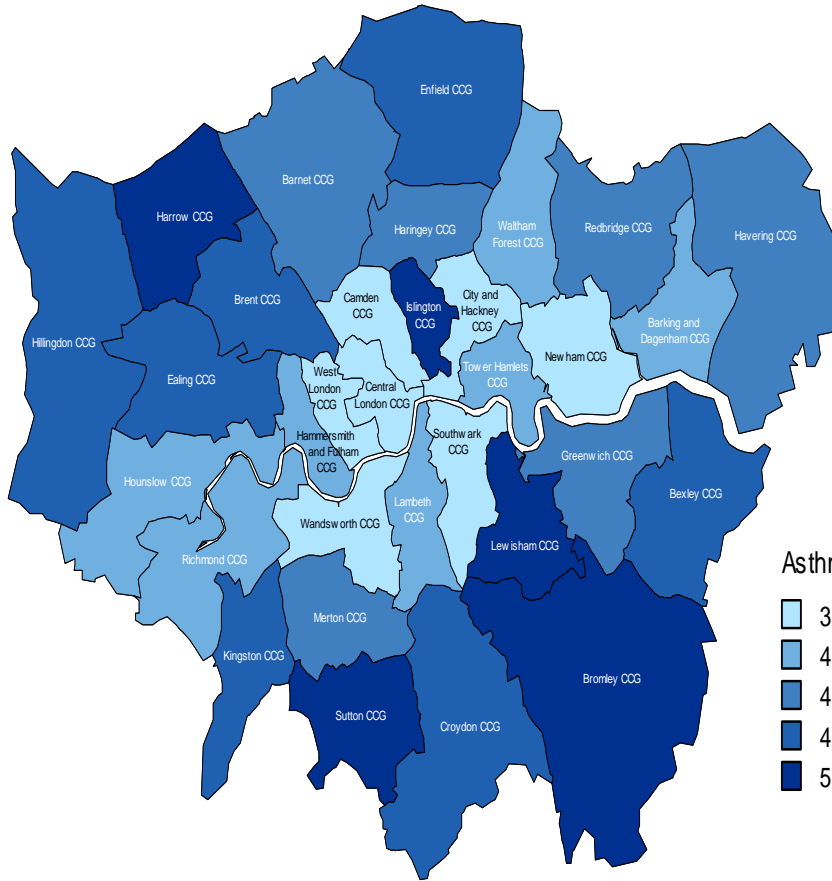
Public Health
England

NHS

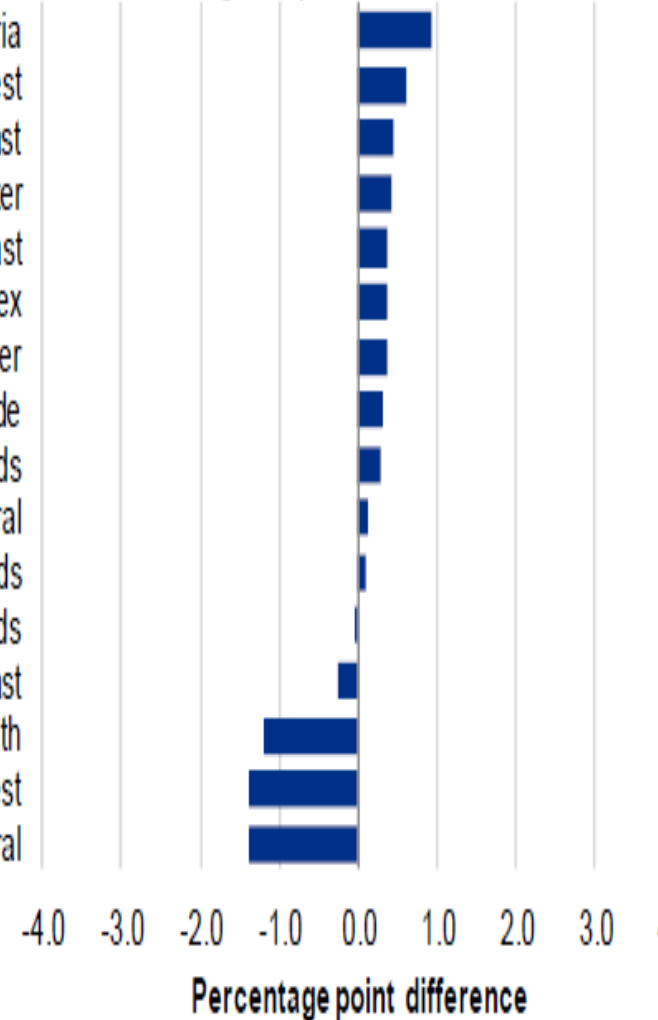
SUPPORTED BY
MAYOR OF LONDON

London's NHS organisations include all of London's CCGs, NHS England and Health Education England

Asthma prevalence in London compared to UK



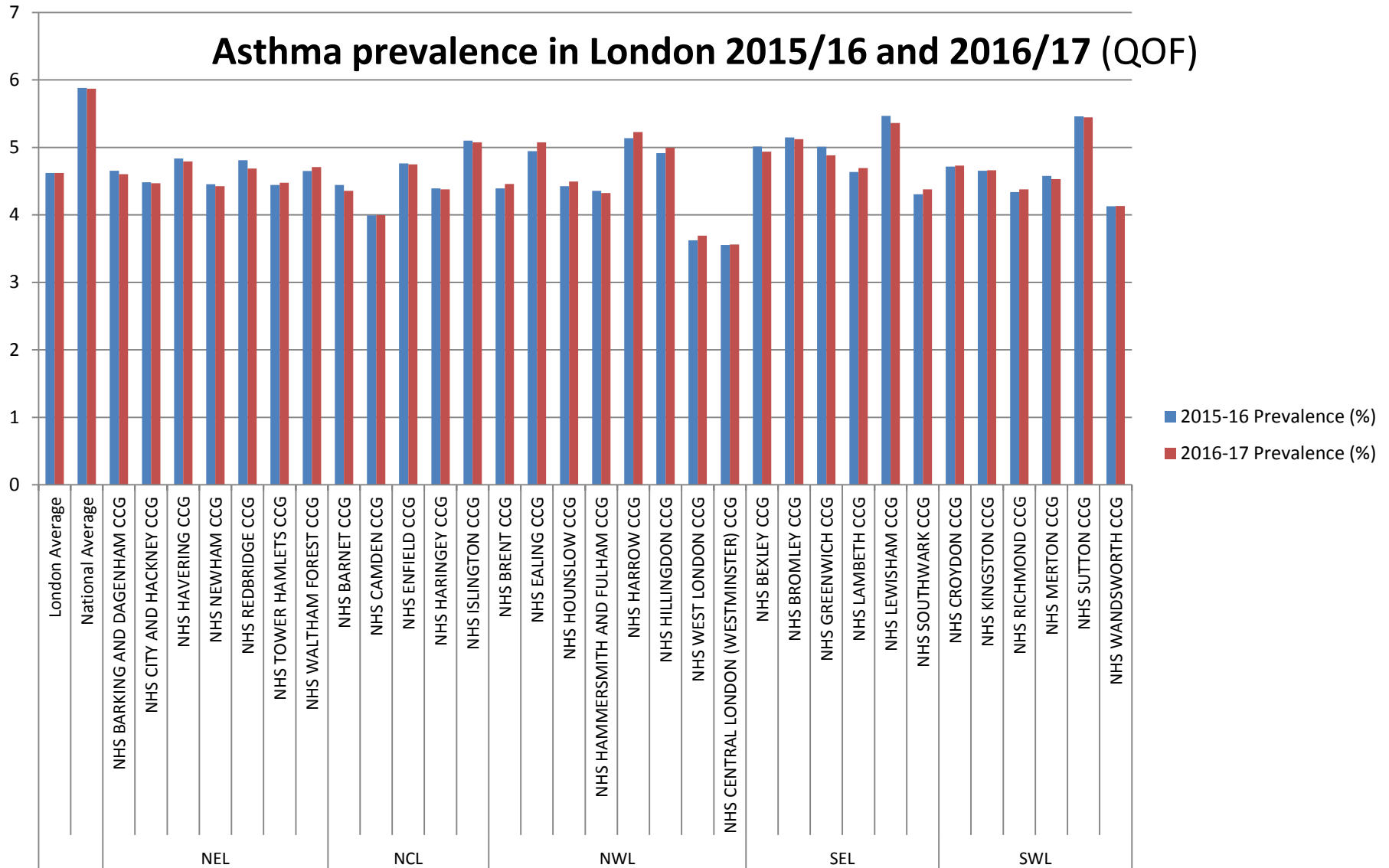
England prevalence: 5.9%



•Recorded prevalence of asthma in London (all age (Quality and Outcomes Framework)

Asthma prevalence across London 2015/16 & 16/17

Asthma prevalence in London 2015/16 and 2016/17 (QOF)



(England and London benchmarks (HES 2016)

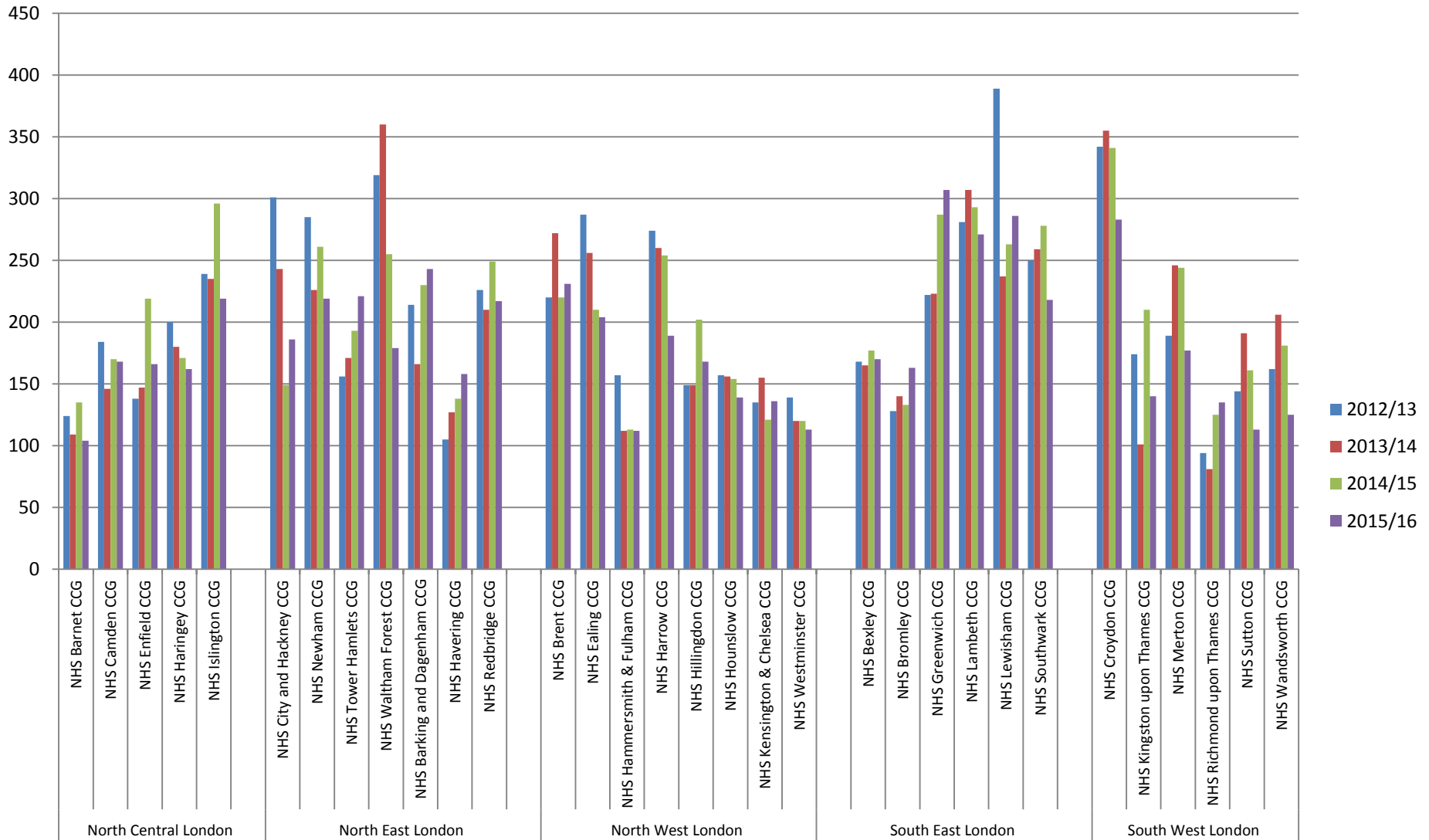
Area	Value	Lower CI	Upper CI
England	198.6	196.2	201.1
London NHS region	190.9*	-	-
NHS Barking And Dagenha...	242.7	206.0	284.0
NHS Barnet CCG	103.9	84.4	126.7
NHS Bexley CCG	170.4	137.9	208.3
NHS Brent CCG	230.6	199.0	265.7
NHS Bromley CCG	163.1	135.8	194.3
NHS Camden CCG	168.0	132.6	209.9
NHS Central London (Wes...	113.2	80.1	155.3
NHS City And Hackney CC...	185.6	155.0	220.6
NHS Croydon CCG	282.9	250.3	318.6
NHS Ealing CCG	203.8	176.4	234.3
NHS Enfield CCG	165.8	139.4	195.6
NHS Greenwich CCG	306.9	267.2	350.8
NHS Hammersmith And Ful...	111.6	80.7	150.3
NHS Haringey CCG	162.3	133.0	196.1
NHS Harrow CCG	189.3	156.0	227.5
NHS Havering CCG	157.8	127.8	192.7
NHS Hillingdon CCG	167.8	139.3	200.3
NHS Hounslow CCG	139.0	112.7	169.5
NHS Islington CCG	219.2	176.7	268.9
NHS Kingston CCG	140.3	107.8	179.5
NHS Lambeth CCG	270.6	234.1	311.1
NHS Lewisham CCG	285.8	248.2	327.5
NHS Merton CCG	177.4	142.3	218.6
NHS Newham CCG	219.2	190.4	251.0
NHS Redbridge CCG	217.0	185.5	252.3
NHS Richmond CCG	135.1	104.3	172.2
NHS Southwark CCG	217.6	183.3	256.5
NHS Sutton CCG	113.5	84.5	149.2
NHS Tower Hamlets CCG	220.9	186.7	259.5
NHS Waltham Forest CCG	178.8	149.3	212.4
NHS Wandsworth CCG	124.9	100.7	153.2
NHS West London (K&C &...	135.9	103.2	175.6

Source: Hospital Episode Statistics (HES). Copyright © 2016, Re-used with the permission of NHS Digital. All rights reserved.

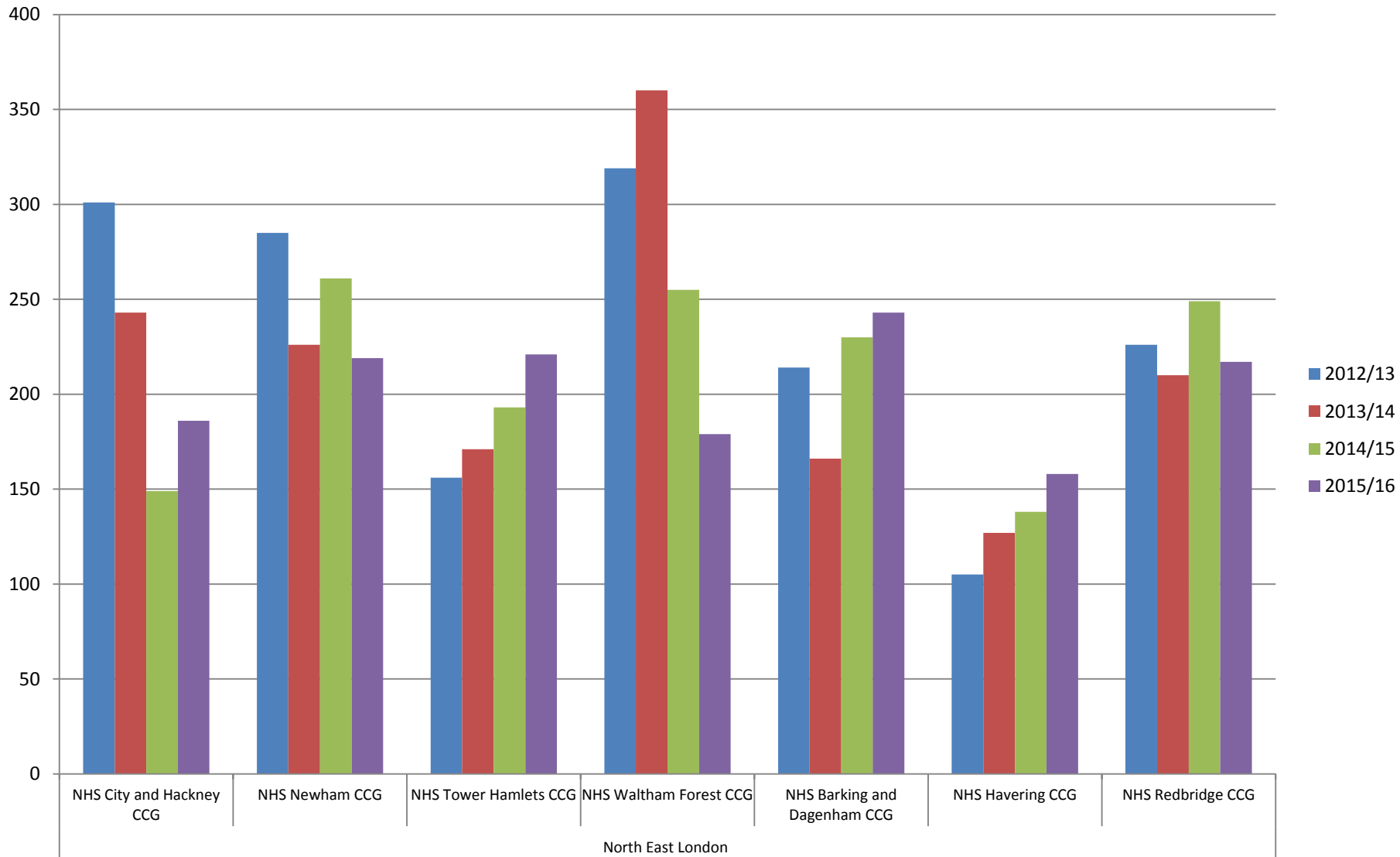
Reduce the number
of acute attacks

Reduce inappropriate
attendance to ED

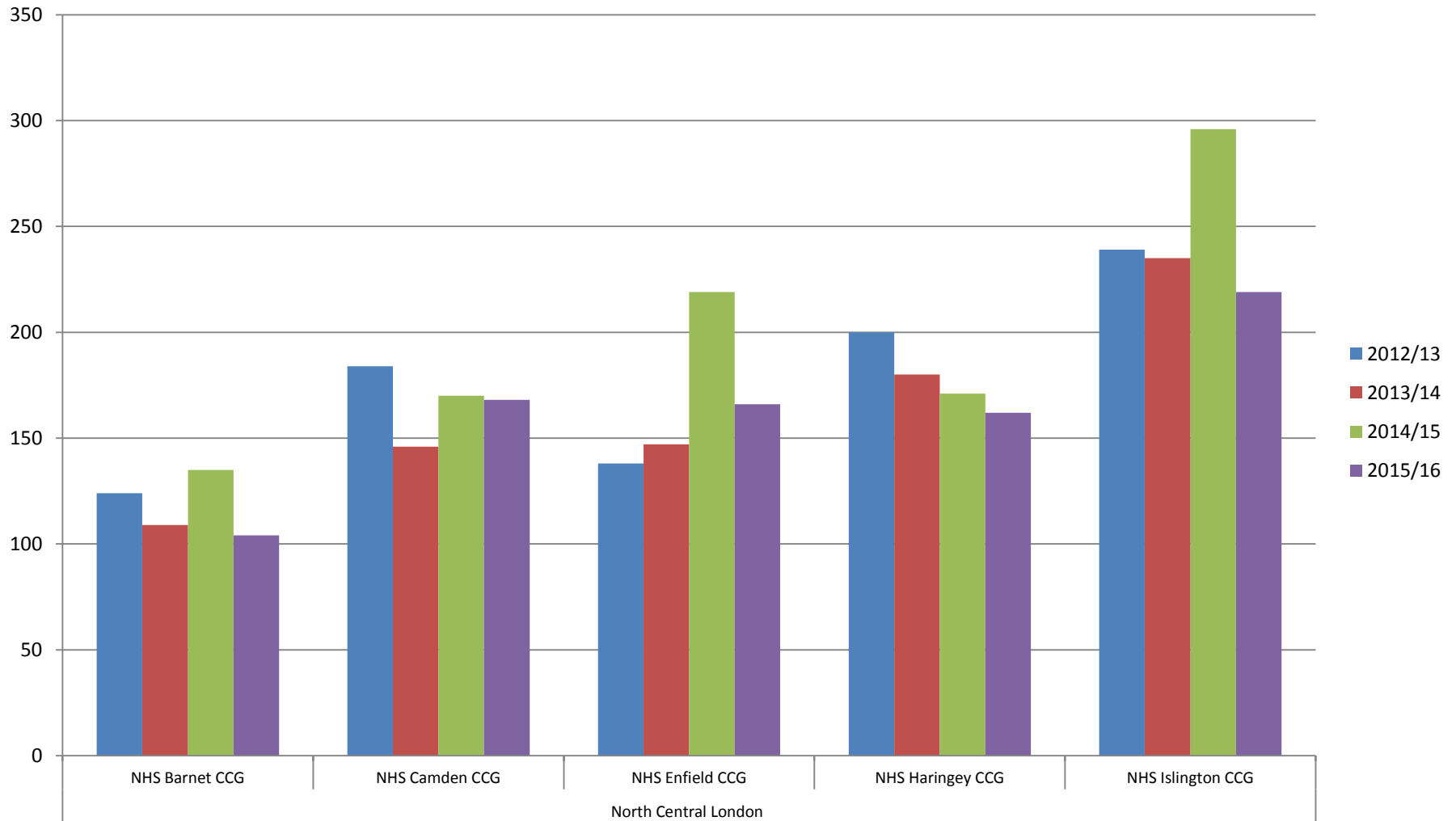
Admission rates by STP area 2012- 2015/16



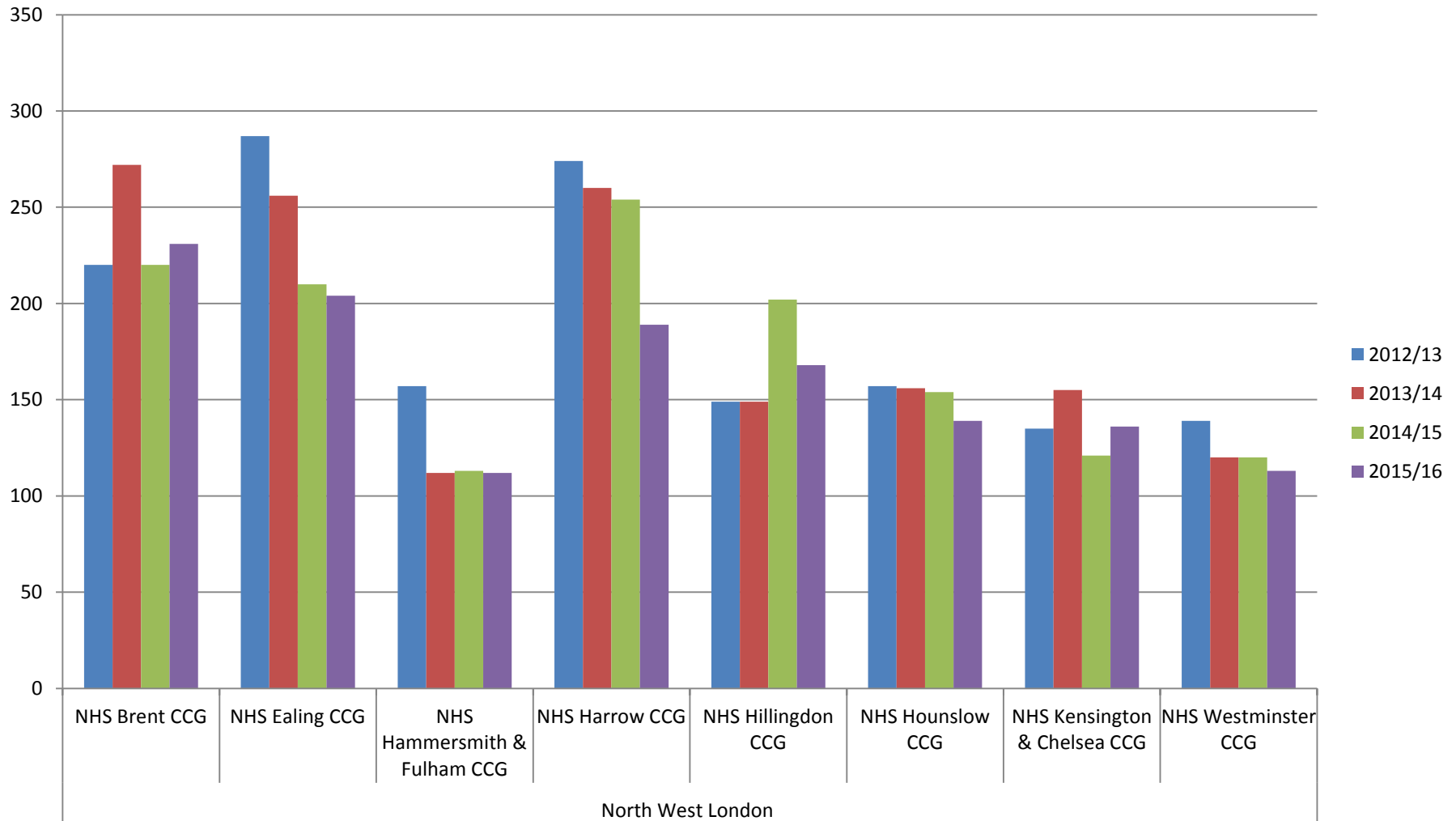
Admission rates NEL STP area 2012- 2015/16



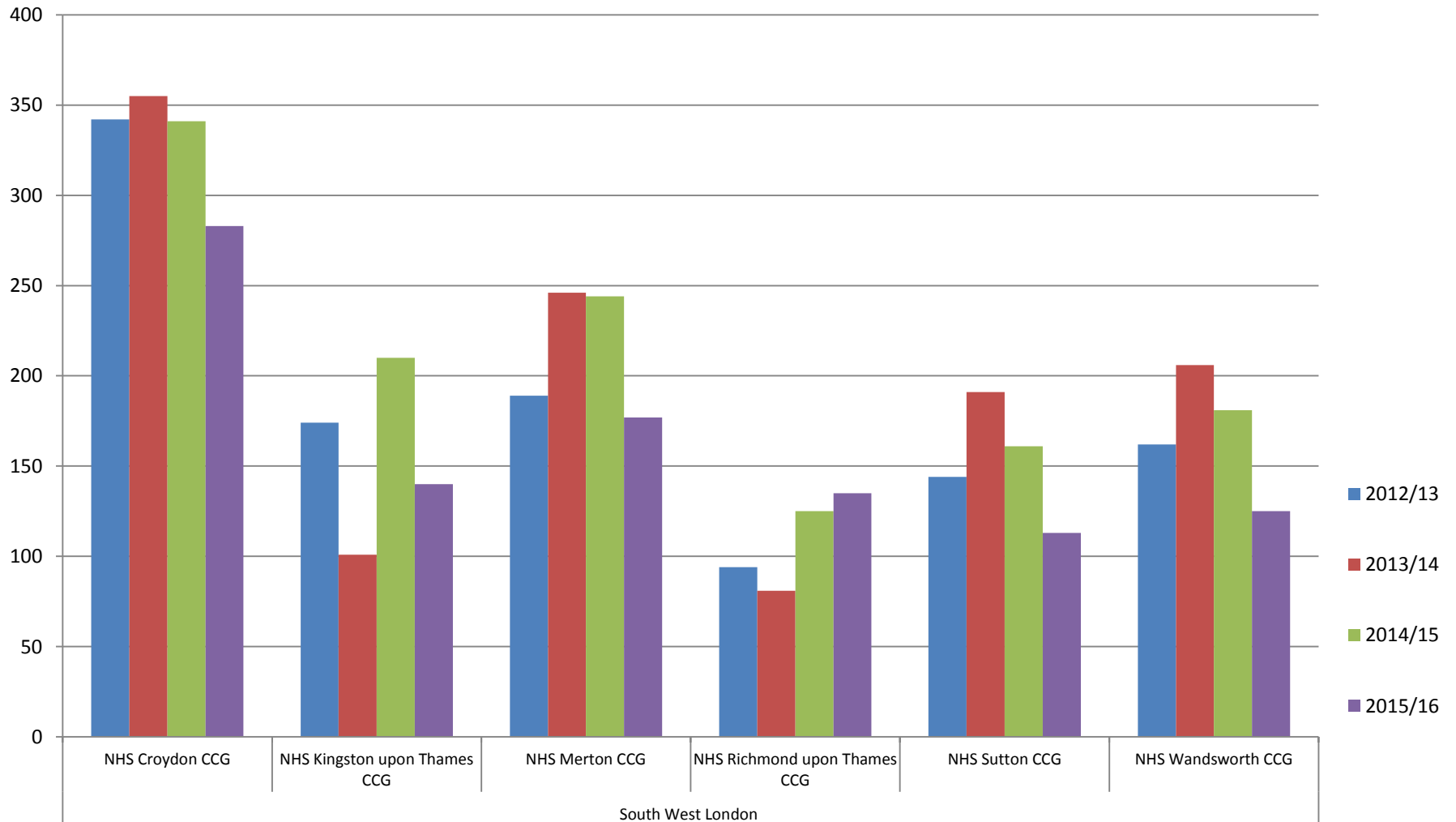
Admission rates NCL STP area 2012- 2015/16



Admission rates NWL STP area 2012- 2015/16



Admission rates SWL STP area 2012- 2015/16



Admission rates SEL STP area 2012- 2015/16

