
THE EPSOM & ST HELIER WAY



- Dr Ruth Charlton, Deputy CEO
- Dr Amir Hassan, Clinical Director A & E
- Craig Wood, Head of Nursing, A & E
- Deborah Frodsham, Deputy COO
- Dr Simon Winn, Clinical Director
Medicine

Delivering great care to every patient every day

ED Clinical Leadership



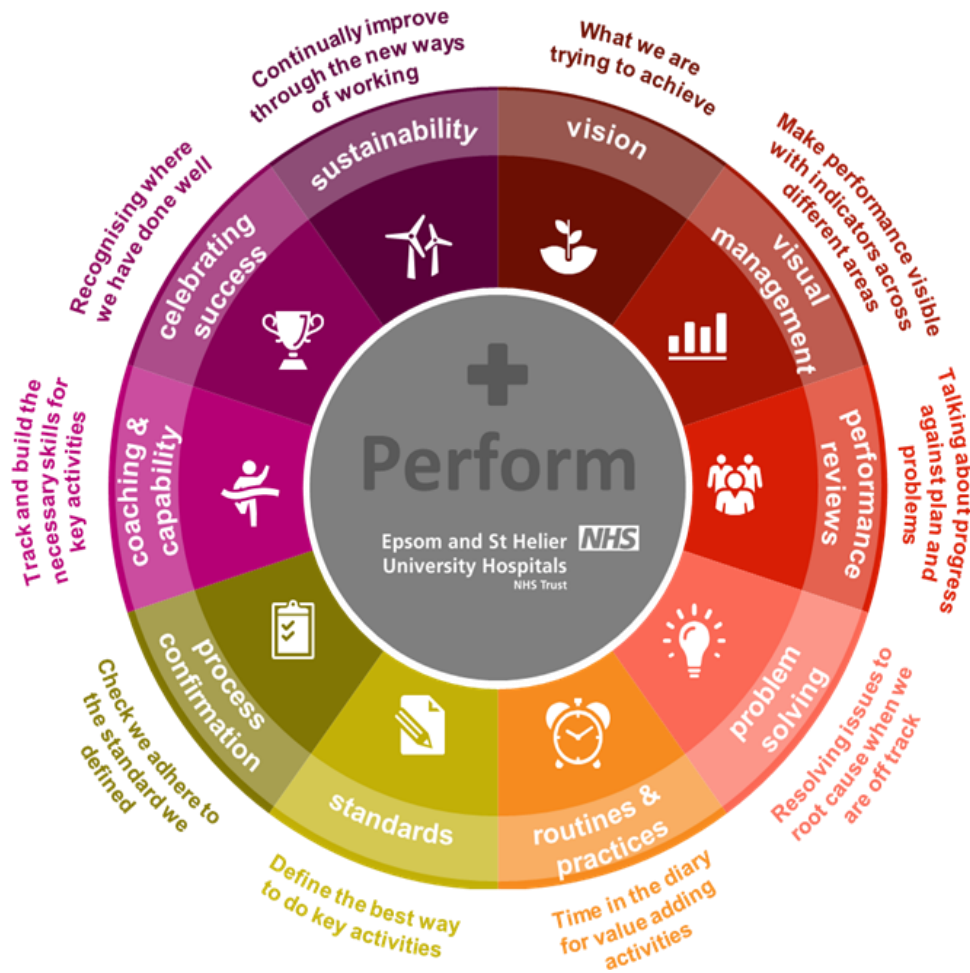
- Leadership, leadership and more leadership
- ED structure and patient pathway development
- Right person, right place, right time, first time
- Senior clinical support on shop floor
- Stable workforce, but also development of alternative staffing models
- Staff involvement

Nursing Leadership in ED/AMU at Epsom & St Helier Hospitals



- 8A lecturer Practitioners dedicated to UC
- Advanced Nurse Practitioners
- Emergency Care Nurses in Resus and Medical assistants
- Leadership at handovers
- Workforce to meet demand at front door - Right person first time
- Fluidity of senior nurses (Band 7 and 8's)

Improving Patient Flow – The Epsom & St Helier Way

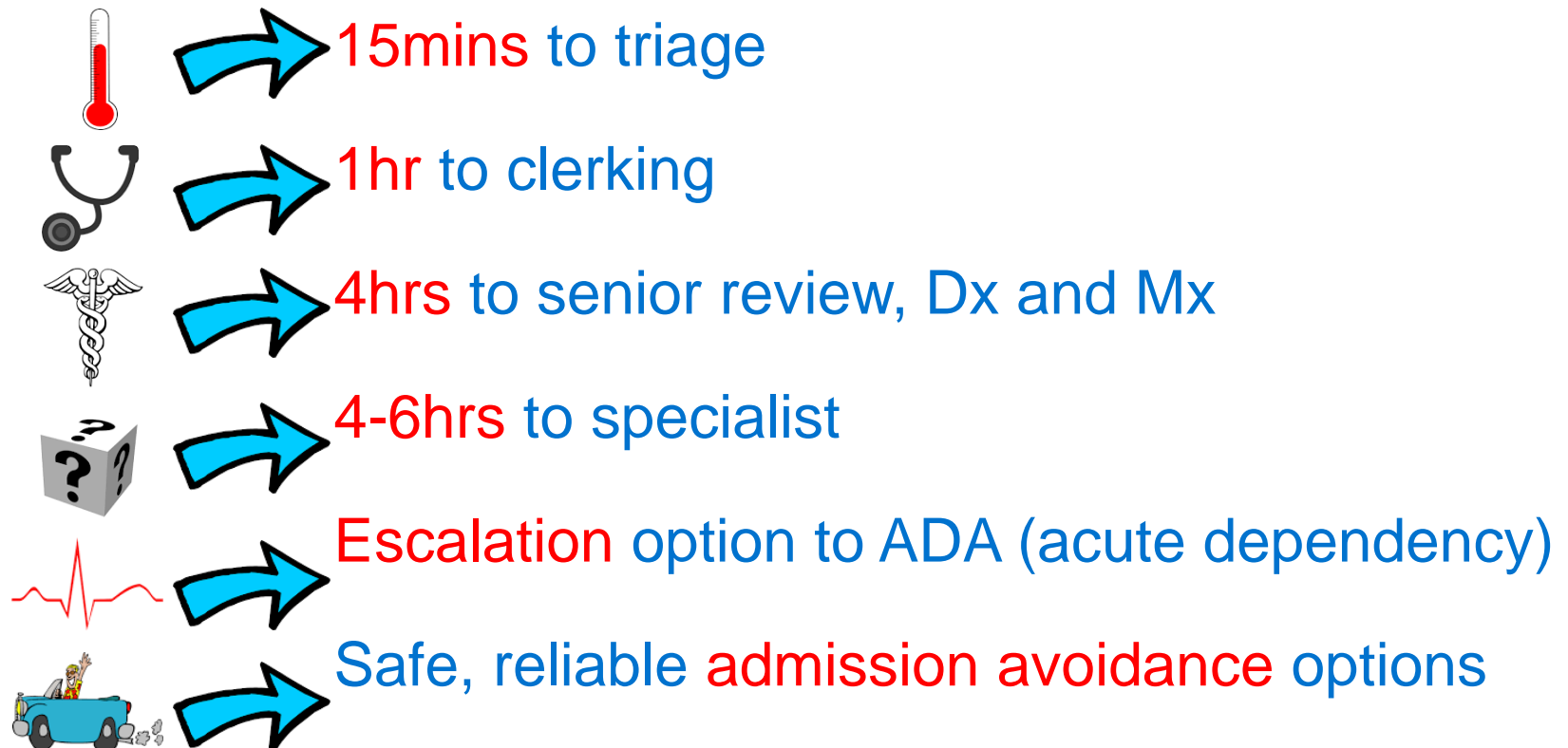


Clinical Leadership – AMU

RAPID Hub Summary



Fast and safe pathway for GP and ED referred patients to RAPID medical assessment



What this means for us

