

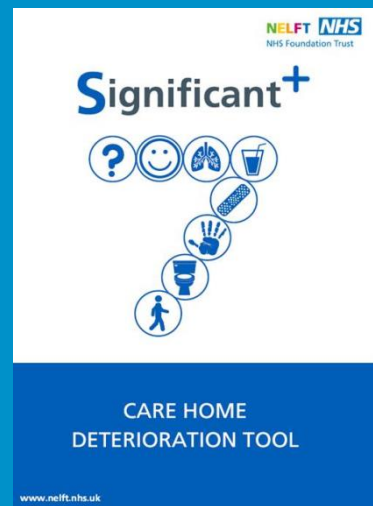


# EHCH Workforce Training and Development

## Significant 7 Preventing and Recognising Deterioration - Cerrie Baines

Following the review of LAS and NHS 111 calls data, evidence shows that the London Ambulance Service receive a high number of calls from Care Homes; often responding to concerns or situations that could have been either managed in the care home or supported by health services within the community. Often this is due to staff confidence, knowing what alternative actions can be taken or awareness of services available for care home staff to contact.

It is also reported that there is a high turnover of staff in the care home sector; therefore focusing on the development of care home staff to increase their knowledge and recognition of early signs of deterioration within their residents, and providing supportive tools, will help raise awareness of any changes to residents wellbeing whilst also improving their experiences and quality of life.



### What did HLP do to support?

Healthy London Partnership (HLP) partnered with North East London NHS Foundation Trust (NELFT) to provide Significant 7 training for Care Homes across London to support staff with identifying deteriorating residents, improve communications within the home and take appropriate action to meet each individual's needs.

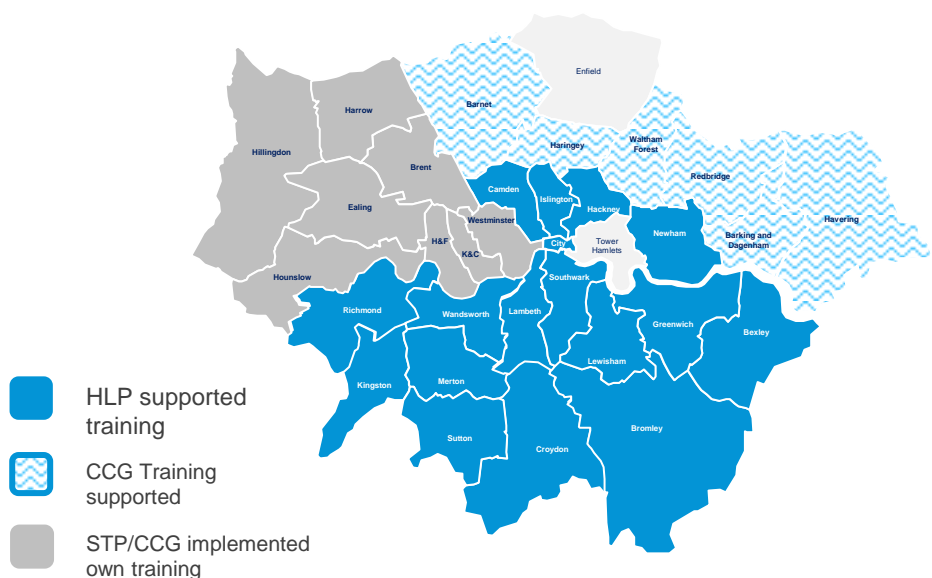
In 2018/19 HLP purchased 100 Significant 7 licences which were allocated to Care Homes across London who attended training and committed to implementing the training model and tools to all staff within their home. HLP also funded training events to support facilitation of training sessions for Care Home Managers or nominated trainers. Each STP (excluding NWL) were offered 25 licenses per area.

Significant 7 uses a 'train the trainer' education model; whereby individuals identified to teach, mentor or train others attend training themselves. For sustainability purposes the train-the-trainer approach was essential to ensure a strong overall training program would be embedded within care homes to improve effectiveness, efficiency and productivity.

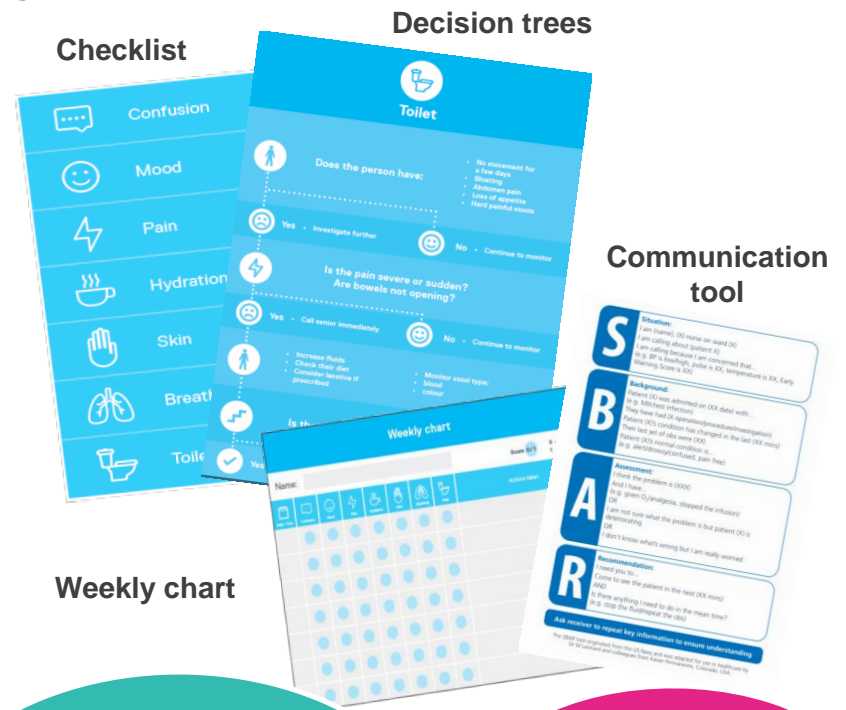
Training has been provided in north east London, north central London (Islington), south west London and south east London between July 2018 – March 2019; with over 70 representatives from **54 Care Homes trained**. The map below indicates the boroughs who have received Significant 7 training.

Significant 7 training has also been delivered in other areas across London, however this was commissioned locally. North West London STP have produced and rolled out their own training tool to care homes across their patch.

### Significant 7 training coverage



### Significant 7 tools...



*"This training has highlighted how important it is for me as a carer to know my residents as well as possible, to have a higher chance of being able to detect easily should any change occur."*

*"This will change my daily practice by using this tool to assess my residents and look out for any deterioration."*

*"It will empower staff and give us more confidence."*

*"I will now incorporate Significant 7 into my assessments."*

*"This will help me to support carers in my cluster to recognise early warning signs."*

*"I feel more empowered to go back to my role."*

To find out more about preventing and recognising deterioration using the Significant 7 tool please contact the team at NELFT: [Significant7@nelft.nhs.uk](mailto:Significant7@nelft.nhs.uk)