



Enhanced Health in Care Homes Network Group

Our Enhanced Health in Care Homes (EHCH) Network Group brings together stakeholders aiming to support the care home sector; focusing on key areas that will help to improve communications between health and social care services, and raise awareness of support available out in the community as well as in a primary and secondary care setting. Meeting on a monthly basis, it provides an opportunity for people to share information and examples of best practice that could be replicated in other areas across London.

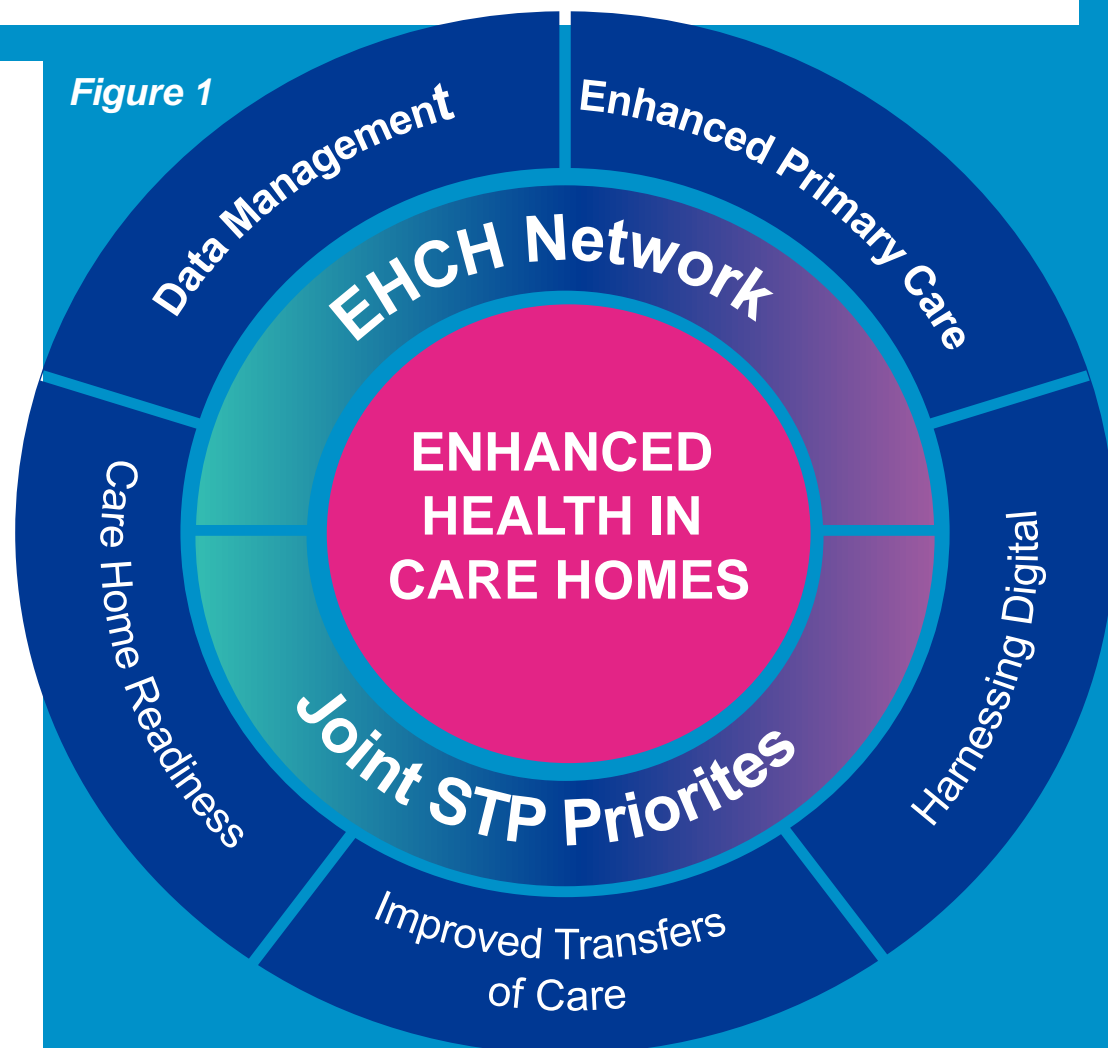
The HLP EHCH programme priorities for 2019/20 are outlined in *figure 1*, and we are also supporting STPs with the delivery of their local plans and priorities; in order to help meet the needs of their local workforce and people requiring care.

How Healthy London Partnership's Enhanced Health in Care Homes Programme supported this work?

We are dedicated to working in collaboration with our partners to help maintain the momentum of implementing the EHCH national framework and Long Term Plan in London. We extend the membership to incorporate all organisations, both large and small, who are involved in improving the experience of care for our elderly population.

Through strong engagement and great partnerships we are able to gain access to a vast range of examples of good practice and local innovation projects, and encourage sharing of this information across wider networks we may be unable to reach.

Figure 1



"Pulling a good network together takes effort, sincerity and time." - Alan Collins



Supported by and delivering for:



SUPPORTED BY
MAYOR OF LONDON



@healthyLDN